



ELECTRONIC COPY

LG640498450
Report verification at igi.org



June 24, 2024

IGI Report Number LG640498450

Description LABORATORY GROWN DIAMOND

Shape and Cutting Style CUT CORNERED RECTANGULAR MODIFIED BRILLIANT

Measurements 8.35 X 5.93 X 4.05 MM

GRADING RESULTS

Carat Weight 1.72 CARAT

Color Grade E

Clarity Grade VS 1

June 24, 2024
IGI Report Number LG640498450
Description LABORATORY GROWN DIAMOND
Shape and Cutting Style CUT CORNERED RECTANGULAR MODIFIED BRILLIANT
Measurements 8.35 X 5.93 X 4.05 MM

GRADING RESULTS

Carat Weight 1.72 CARAT

Color Grade E

Clarity Grade VS 1

ADDITIONAL GRADING INFORMATION

Polish EXCELLENT

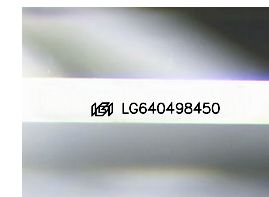
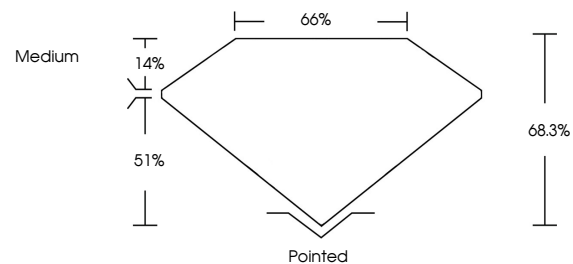
Symmetry EXCELLENT

Fluorescence NONE

Inscription(s) LG640498450

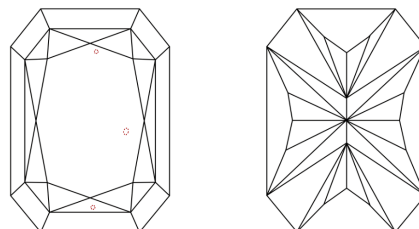
Comments: This Laboratory Grown Diamond was created by Chemical Vapor Deposition (CVD) growth process. Type IIa

PROPORTIONS



Sample Image Used

CLARITY CHARACTERISTICS



KEY TO SYMBOLS

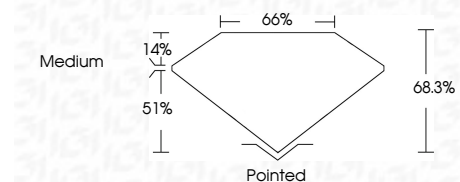
Red symbols indicate internal characteristics. Green symbols indicate external characteristics.

COLOR

D E F G H I J Faint Very Light Light

CLARITY

IF VS 1-2 VS 1-2 SI 1-2 I 1-3
Internally Flawless Very Very Slightly Included Very Slightly Included Slightly Included Included



ADDITIONAL GRADING INFORMATION

Polish EXCELLENT

Symmetry EXCELLENT

Fluorescence NONE

Inscription(s) LG640498450

Comments: This Laboratory Grown Diamond was created by Chemical Vapor Deposition (CVD) growth process. Type IIa



IGI



June 24, 2024
IGI Report No. LG640498450
CUT CORNERED RECT. MODIFIED BRILLIANT
8.35 X 5.93 X 4.05 MM
1.72 CARAT
E
VS 1
68.3%
65%
Medium
Pointed
EXCELLENT
EXCELLENT
NONE
LG640498450

Comments: This Laboratory Grown Diamond was created by Chemical Vapor Deposition (CVD) growth process. Type IIa