

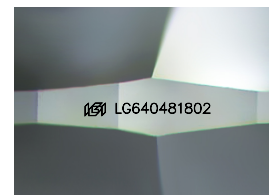
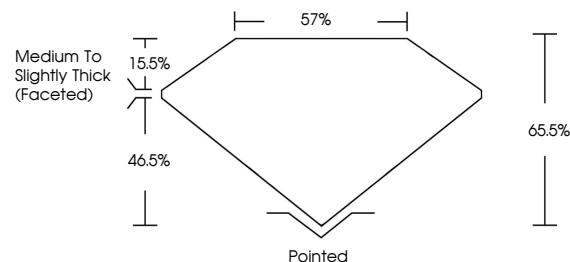


**ELECTRONIC COPY**

## LABORATORY GROWN DIAMOND REPORT

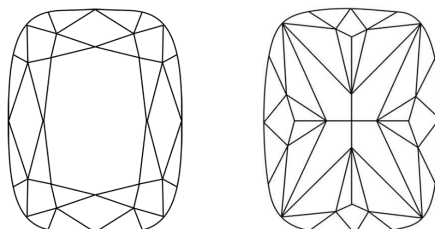
LG640481802  
Report verification at [lgi.org](https://lgi.org)

## PROPORTIONS



Sample Image Used

## CLARITY CHARACTERISTICS



### KEY TO SYMBOLS

Red symbols indicate internal characteristics.  
Green symbols indicate external characteristics.

**COLOR**

D E F G H I J Faint Very Light Light

## CLARITY

IF	VVS <sup>1,2</sup>	VS <sup>1,2</sup>	SI <sup>1,2</sup>	I <sup>1,3</sup>
Internally Flawless	Very Very Slightly Included	Very Slightly Included	Slightly Included	Included

## LABORATORY GROWN DIAMOND REPORT



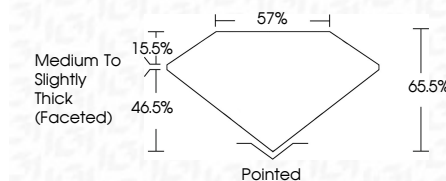
June 30, 2024

IGI Report Number **LG640481802**Description **LABORATORY GROWN DIAMOND**Shape and Cutting Style **CUSHION BRILLIANT**

Measurements 10.15 X 8.08 X 5.29 MM

## GRADING RESULTS

Carat Weight **3.35 CARATS**

Color Grade **E**Clarity Grade **INTERNALLY FLAWLESS**

### ADDITIONAL GRADING INFORMATION

Polish EXCELLENT

Symmetry **EXCELLENT**Fluorescence NONEInscription(s) **13** LG640481802

Comments: As Grown - No indication of post-growth treatment.

treatment.

This Laboratory Grown Diamond was created by High Pressure High Temperature (HPHT) growth process.

Type II

Type II



June 30, 2024	CS Report No. LG4048 1802	CS GEMSTONE BRILLIANT
10.15 X 8.08 X 5.27 MM		
Carat Weight	3.35 CARATS	
Color Grade	E	
Clarity Grade	IF	
Depth	65.0%	
Table	57%	
Grade	Medium To Slightly Thick (Peculiar)	
Culet	Pointed	
Polish	EXCELLENT	
Symmetry	EXCELLENT	
Fluorescence	NONE	
Inscription(s)	6891 LG4048 1802	
<p><b>Comments:</b></p> <p>As Grown - No indication of post-growth treatment.</p> <p>This Laboratory Grown Diamond was created by High Pressure High Temperature (HPHT) growth process.</p> <p>TYPE 1b</p>		



THIS DOCUMENT WAS PRODUCED WITH THE FOLLOWING SECURITY MEASURES: SPECIAL DOCUMENT PAPER, INK SCREENS, WATERMARK, BACKGROUND DESIGNS, HOLOGRAM AND OTHER SECURITY FEATURES NOT LISTED AND DO EXCEED DOCUMENT SECURITY INDUSTRY GUIDELINE