

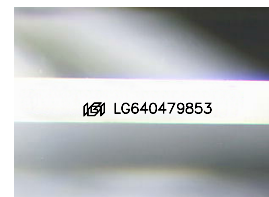
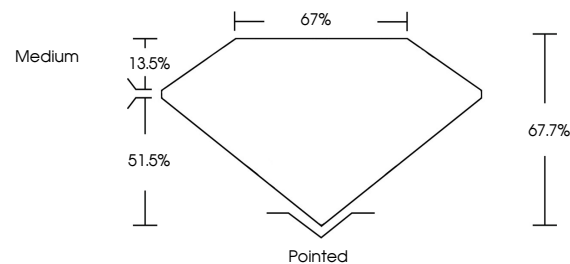


**ELECTRONIC COPY**

## LABORATORY GROWN DIAMOND REPORT

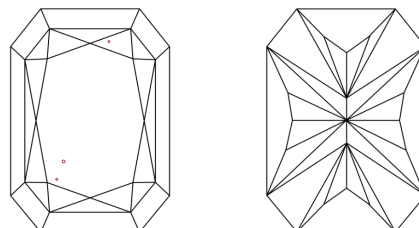
LG640479853  
Report verification at [igi.org](https://www.igi.org)

## PROPORTIONS



Sample Image Used

## CLARITY CHARACTERISTICS



### KEY TO SYMBOLS

Red symbols indicate internal characteristics.  
Green symbols indicate external characteristics.

## COLOR

D E F G H I J Faint Very Light Light

## CLARITY

IF	VVS <sup>1-2</sup>	VS <sup>1-2</sup>	SI <sup>1-2</sup>	I <sup>1-3</sup>
Internally Flawless	Very Very Slightly Included	Very Slightly Included	Slightly Included	Included

## LABORATORY GROWN DIAMOND REPORT



June 20, 2024

IGI Report Number **LG640479853**Description **LABORATORY GROWN DIAMOND**

Shape and Cutting Style

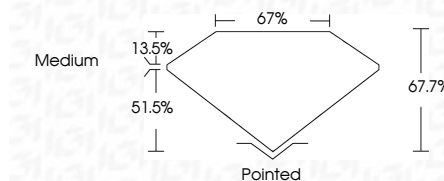
Measurements **8.20 X 5.75 X 3.89 MM**

## GRADING RESULTS

Carat Weight 1.56 CARAT

Color Grade D

Clarity Grade VS 1



### ADDITIONAL GRADING INFORMATION

Polish **EXCELLENT**Symmetry **EXCELLENT**Fluorescence NONEInscription(s)  LG640479853

Comments: This Laboratory Grown Diamond was created by Chemical Vapor Deposition (CVD) growth process.  
Type IIa



© IGI 2020, International Gemological Institute

FD - 10 20

**www.igi.org**

THIS DOCUMENT WAS PRODUCED WITH THE FOLLOWING SECURITY MEASURES: SPECIAL DOCUMENT PAPER, INK SCREENS, WATERMARK, BACKGROUND DESIGNS, HOLOGRAM AND OTHER SECURITY FEATURES NOT LISTED AND DO EXCEED DOCUMENT SECURITY INDUSTRY GUIDELINE

June 20, 2024	
GI Report No. 10	
CUT CONERNED	
3.20 X 5.75 X 3.3	
Carat Weight	
Color Grade	
Clarity Grade	
Depth	
Table	
Girdle	
Culet	
Polish	
Symmetry	
Fluorescence	
Inscription(s)	
Comments:	
This Laboratory	
credited by Chem	
(CVD) growth p	
Type IIa	