



ELECTRONIC COPY

LG640442412
Report verification at igi.org



September 11, 2024
IGI Report Number **LG640442412**
Description **LABORATORY GROWN DIAMOND**
Shape and Cutting Style **CUT CORNERED
RECTANGULAR MODIFIED
BRILLIANT**
Measurements **15.02 X 10.39 X 7.30 MM**
GRADING RESULTS
Carat Weight **11.02 CARATS**
Color Grade **FANCY VIVID BLUE**
Clarity Grade **SI 1**

September 11, 2024
IGI Report Number **LG640442412**
Description **LABORATORY GROWN DIAMOND**
Shape and Cutting Style **CUT CORNERED RECTANGULAR
MODIFIED BRILLIANT**
Measurements **15.02 X 10.39 X 7.30 MM**

GRADING RESULTS

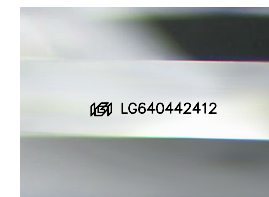
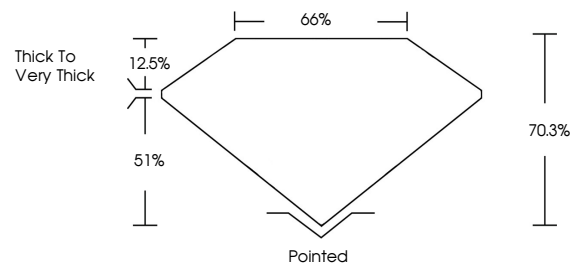
Carat Weight **11.02 CARATS**
Color Grade **FANCY VIVID BLUE**
Clarity Grade **SI 1**

ADDITIONAL GRADING INFORMATION

Polish **EXCELLENT**
Symmetry **EXCELLENT**
Fluorescence **VERY SLIGHT**
Inscription(s) **IGI LG640442412**

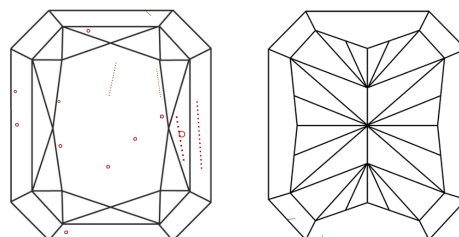
Comments: This Laboratory Grown Diamond was created by Chemical Vapor Deposition (CVD) growth process. Indications of post-growth treatment.

PROPORTIONS



Sample Image Used

CLARITY CHARACTERISTICS



KEY TO SYMBOLS

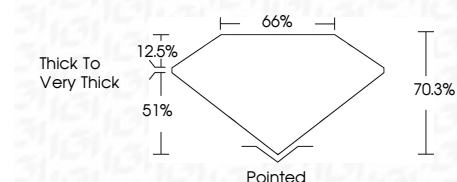
Red symbols indicate internal characteristics.
Green symbols indicate external characteristics.

COLOR

D E F G H I J Faint Very Light Light

CLARITY

IF	VS ¹⁻²	VS ¹⁻²	SI ¹⁻²	I ¹⁻³
Internally Flawless	Very Very Slightly Included	Very Slightly Included	Slightly Included	Included



ADDITIONAL GRADING INFORMATION

Polish **EXCELLENT**
Symmetry **EXCELLENT**
Fluorescence **VERY SLIGHT**
Inscription(s) **IGI LG640442412**
Comments: This Laboratory Grown Diamond was created by Chemical Vapor Deposition (CVD) growth process. Indications of post-growth treatment.



September 11, 2024
IGI Report No. LG640442412
CUT CORNERED RECT. MODIFIED BRILLIANT
15.02 X 10.39 X 7.30 MM
11.02 CARATS
FANCY VIVID BLUE
SI 1
70.3%
65%
Thick To Very Thick
Pointed
EXCELLENT
EXCELLENT
VERY SLIGHT
IGI LG640442412
Comments: This Laboratory Grown Diamond was created by Chemical Vapor Deposition (CVD) growth process. Indications of post-growth treatment.