

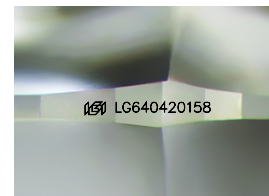
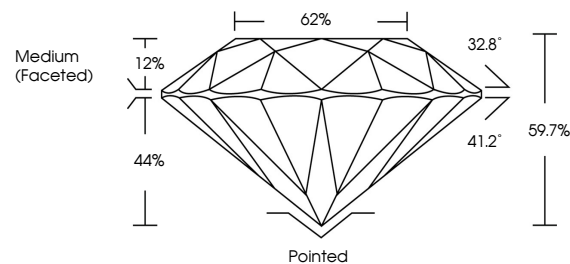


ELECTRONIC COPY

LABORATORY GROWN DIAMOND REPORT

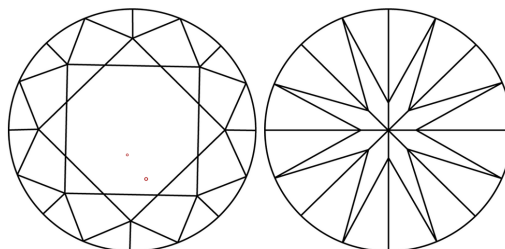
LG640420158
Report verification at igi.org

PROPORTIONS



Sample Image Used

CLARITY CHARACTERISTICS



KEY TO SYMBOLS

Red symbols indicate internal characteristics.
Green symbols indicate external characteristics.

COLOR

D E F G H I J Faint Very Light Light

CLARITY

IF	VVS ^{1,2}	VS ^{1,2}	SI ^{1,2}	I ^{1,3}
Internally Flawless	Very Very Slightly Included	Very Slightly Included	Slightly Included	Included

LABORATORY GROWN DIAMOND REPORT



July 2, 2024

IGI Report Number **LG640420158**

Description	LABORATORY GROWN DIAMOND
-------------	--------------------------

Shape and Cutting Style **ROUND BRILLIANT**

Measurements 8.77 - 8.82 X 5.25 MM

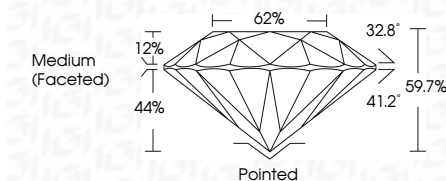
GRADING RESULTS

Carat Weight **2.50 CARATS**

Color Grade **FANCY INTENSE PINK**

Clarity Grade VS 1

Cut Grade **EXCELLENT**



ADDITIONAL GRADING INFORMATION

Polish **EXCELLENT**Symmetry **EXCELLENT**

Fluorescence SLIGHT

Inscription(s) LG640420158

Comments: This Laboratory Grown Diamond was created by Chemical Vapor Deposition (CVD) growth process.

Indications of post-growth treatment.



© IGI 2020, International Gemological Institute

FD - 10 20

www.igi.org

THIS DOCUMENT WAS PRODUCED WITH THE FOLLOWING SECURITY MEASURES: SPECIAL DOCUMENT PAPER, INK SCREENS, WATERMARK, BACKGROUND DESIGNS, HOLOGRAM AND OTHER SECURITY FEATURES NOT LISTED AND DO EXCEED DOCUMENT SECURITY INDUSTRY GUIDELINE

July 2, 2024	GL Report No. LGS40620158	
ROUND BRILLIANT		
Carat Weight	2.50 CARATS	
Color Grade	FANCY INTENSE PINK	
Clarity Grade	VS 1	
Depth	EXCELLENT	
Table	69.7%	
Girdle	62%	
	Medium (Faceted)	
Culet	Pointed	
Polish	EXCELLENT	
Symmetry	EXCELLENT	
Fluorescence	SLIGHT	
Inscriptions(s)	1691 LGS40620158	
Comments:		
This is a Heavy Crown Diamond was treated by Chemical Vapor Deposition (CVD) growth process. indications of post-growth treatment.		