

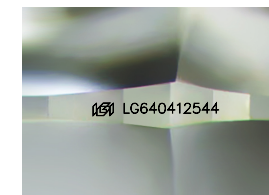


**ELECTRONIC COPY**

LG640412544  
Report verification at [igi.org](http://igi.org)

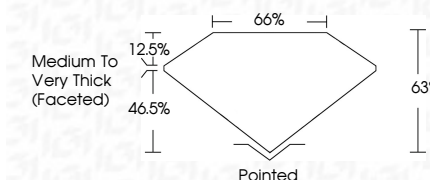
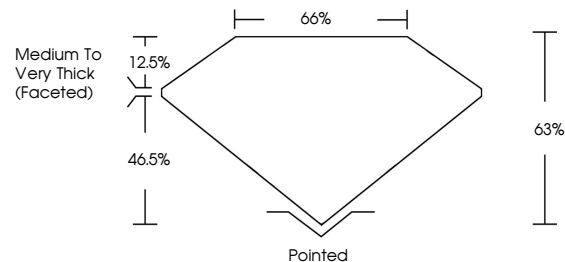


July 2, 2024  
IGI Report Number **LG640412544**  
Description **LABORATORY GROWN DIAMOND**  
Shape and Cutting Style **CUSHION BRILLIANT**  
Measurements **14.12 X 10.64 X 6.70 MM**  
**GRADING RESULTS**  
Carat Weight **9.07 CARATS**  
Color Grade **FANCY VIVID BLUE**  
Clarity Grade **VS 2**



Sample Image Used

**PROPORTIONS**



July 2, 2024  
IGI Report Number **LG640412544**  
Description **LABORATORY GROWN DIAMOND**  
Shape and Cutting Style **CUSHION BRILLIANT**  
Measurements **14.12 X 10.64 X 6.70 MM**  
**GRADING RESULTS**  
Carat Weight **9.07 CARATS**  
Color Grade **FANCY VIVID BLUE**  
Clarity Grade **VS 2**

**ADDITIONAL GRADING INFORMATION**

Polish **EXCELLENT**  
Symmetry **EXCELLENT**  
Fluorescence **NONE**  
Inscription(s) **IGI LG640412544**

Comments: This Laboratory Grown Diamond was created by Chemical Vapor Deposition (CVD) growth process. Indications of post-growth treatment.

**COLOR**

D E F G H I J Faint Very Light Light

**CLARITY**

IF	VS <sup>1-2</sup>	VS <sup>1-2</sup>	SI <sup>1-2</sup>	I <sup>1-3</sup>
Internally Flawless	Very Very Slightly Included	Very Slightly Included	Slightly Included	Included

**ADDITIONAL GRADING INFORMATION**

Polish **EXCELLENT**  
Symmetry **EXCELLENT**  
Fluorescence **NONE**  
Inscription(s) **IGI LG640412544**  
Comments: This Laboratory Grown Diamond was created by Chemical Vapor Deposition (CVD) growth process. Indications of post-growth treatment.



**IGI**



July 2, 2024  
IGI Report No **LG640412544**  
**CUSHION BRILLIANT**  
**14.12 X 10.64 X 6.70 MM**  
Carat Weight **9.07 CARATS**  
Color Grade **FANCY VIVID BLUE**  
Clarity Grade **VS 2**  
Depth **63%**  
Table **65%**  
Girdle **Medium to Very Thick (Faceted)**  
Culet **Pointed**  
Polish **EXCELLENT**  
Symmetry **EXCELLENT**  
Fluorescence **NONE**  
Inscription(s) **IGI LG640412544**  
Comments: This Laboratory Grown Diamond was created by Chemical Vapor Deposition (CVD) growth process. Indications of post-growth treatment.