



**ELECTRONIC COPY**

LG639499602  
Report verification at igi.org



June 28, 2024  
IGI Report Number **LG639499602**  
Description **LABORATORY GROWN DIAMOND**  
Shape and Cutting Style **CUSHION MODIFIED BRILLIANT**  
Measurements **6.68 X 6.30 X 4.35 MM**  
**GRADING RESULTS**  
Carat Weight **1.71 CARAT**  
Color Grade **FANCY VIVID PINK**  
Clarity Grade **VS 1**

**LABORATORY GROWN DIAMOND REPORT**

June 28, 2024  
IGI Report Number **LG639499602**  
Description **LABORATORY GROWN DIAMOND**  
Shape and Cutting Style **CUSHION MODIFIED BRILLIANT**  
Measurements **6.68 X 6.30 X 4.35 MM**

**GRADING RESULTS**

Carat Weight **1.71 CARAT**  
Color Grade **FANCY VIVID PINK**  
Clarity Grade **VS 1**

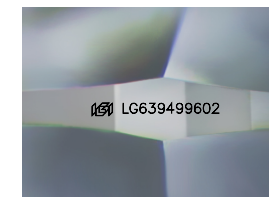
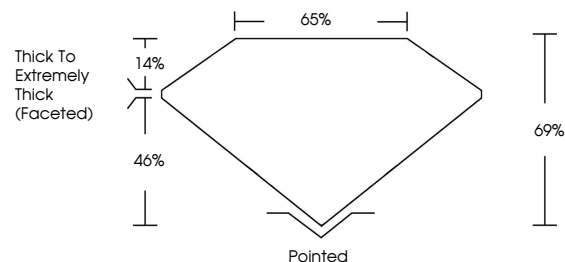
**ADDITIONAL GRADING INFORMATION**

Polish **VERY GOOD**  
Symmetry **VERY GOOD**  
Fluorescence **SLIGHT**  
Inscription(s) **LG639499602**

Comments: This Laboratory Grown Diamond was created by Chemical Vapor Deposition (CVD) growth process.  
Indications of post-growth treatment.

Secondary color: Brown

**PROPORTIONS**



Sample Image Used

**CLARITY CHARACTERISTICS**



**KEY TO SYMBOLS**

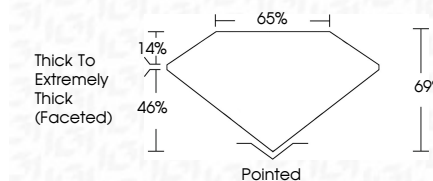
Red symbols indicate internal characteristics.  
Green symbols indicate external characteristics.

**COLOR**

D E F G H I J Faint Very Light Light

**CLARITY**

IF VS<sup>1-2</sup> VS<sup>1-2</sup> SI<sup>1-2</sup> I<sup>1-3</sup>  
Internally Flawless Very Very Slightly Included Very Slightly Included Slightly Included Included



**ADDITIONAL GRADING INFORMATION**

Polish **VERY GOOD**  
Symmetry **VERY GOOD**  
Fluorescence **SLIGHT**  
Inscription(s) **LG639499602**  
Comments: This Laboratory Grown Diamond was created by Chemical Vapor Deposition (CVD) growth process.  
Indications of post-growth treatment.  
Secondary color: Brown



June 28, 2024  
IGI Report No **LG639499602**  
**CUSHION MODIFIED BRILLIANT**  
**6.68 X 6.30 X 4.35 MM**  
Carat Weight **1.71 CARAT**  
Color Grade **FANCY VIVID PINK**  
Clarity Grade **VS 1**  
Depth **69%**  
Table **65%**  
Girdle **Thick To Extremely Thick (Faceted)**  
Culet **Pointed**  
Polish **VERY GOOD**  
Symmetry **VERY GOOD**  
Fluorescence **SLIGHT**  
Inscription(s) **LG639499602**

Comments: This Laboratory Grown Diamond was created by Chemical Vapor Deposition (CVD) growth process.  
Indications of post-growth treatment.  
Secondary color: Brown