

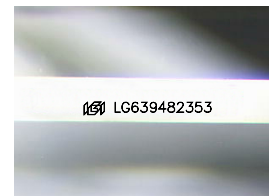
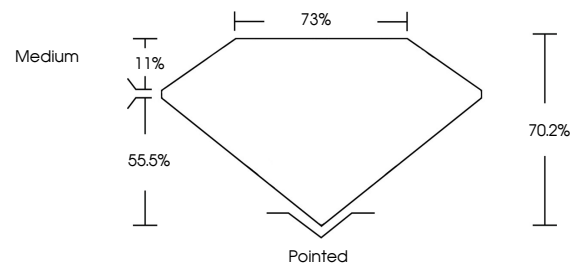


ELECTRONIC COPY

LABORATORY GROWN DIAMOND REPORT

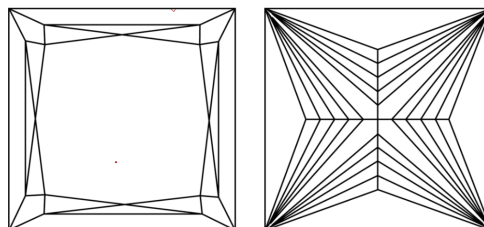
LG639482353
Report verification at igi.org

PROPORTIONS



Sample Image Used

CLARITY CHARACTERISTICS



KEY TO SYMBOLS

Red symbols indicate internal characteristics.
Green symbols indicate external characteristics.

COLOR

D E F G H I J Faint Very Light Light

CLARITY

IF	VVS ¹⁻²	VS ¹⁻²	SI ¹⁻²	I ¹⁻³
Internally Flawless	Very Very Slightly Included	Very Slightly Included	Slightly Included	Included

LABORATORY GROWN DIAMOND REPORT



June 12, 2024

IGI Report Number **LG639482353**

Description	LABORATORY GROWN DIAMOND
-------------	--------------------------

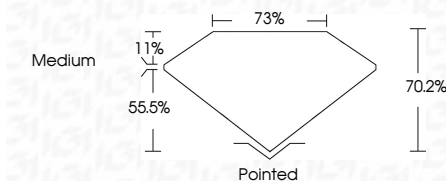
Shape and Cutting Style **PRINCESS CUT**

Measurements **6.39 X 6.14 X 4.31 MM**

GRADING RESULTS

Carat Weight 1.52 CARAT

Color Grade E

Clarity Grade **VVS 2**

ADDITIONAL GRADING INFORMATION

Polish **EXCELLENT**Symmetry **EXCELLENT**Fluorescence **NONE**Inscription(s) LG639482353

Comments: This Laboratory Grown Diamond was created by Chemical Vapor Deposition (CVD) growth process.
Type IIa



© IGI 2020, International Gemological Institute

FD - 10 20



THIS DOCUMENT WAS PRODUCED WITH THE FOLLOWING SECURITY MEASURES: SPECIAL DOCUMENT PAPER, INK SCREENS, WATERMARK, BACKGROUND DESIGNS, HOLOGRAM AND OTHER SECURITY FEATURES NOT LISTED AND DO EXCEED DOCUMENT SECURITY INDUSTRY GUIDELINES

June 12, 2024
GI Report No LG639482353
PRINCESS CUT

3.99 X 6.14 X 4.31 MM	Carat Weight	1.62 CARAT
Color Grade	VVS 2	E
Clarity Grade	70-2%	WVS 2
Cutlet	Medium	70%
Polish	Excellent	None
Symmetry	Excellent	None
Fluorescence	None	None

Comments:
This Laboratory Grown Diamond was created by Chemical Vapor Deposition (CVD) growth process.