



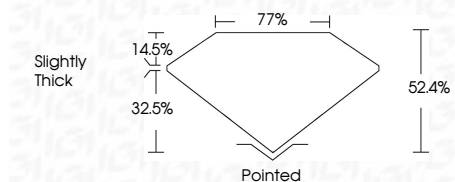
**ELECTRONIC COPY**

LG638494224  
Report verification at igi.org



July 9, 2024  
IGI Report Number **LG638494224**  
Description **LABORATORY GROWN DIAMOND**  
Shape and Cutting Style **OCTAGONAL MIXED CUT**  
Measurements **8.93 X 8.72 X 4.57 MM**

**GRADING RESULTS**  
Carat Weight **3.51 CARATS**  
Color Grade **F**  
Clarity Grade **VVS 2**



**ADDITIONAL GRADING INFORMATION**  
Polish **EXCELLENT**  
Symmetry **EXCELLENT**  
Fluorescence **NONE**  
Inscription(s) **IGI LG638494224**  
Comments: This Laboratory Grown Diamond was created by Chemical Vapor Deposition (CVD) growth process. Type IIa



July 9, 2024  
IGI Report No **LG638494224**  
**OCTAGONAL MIXED CUT**  
8.93 X 8.72 X 4.57 MM  
3.51 CARATS  
F  
VVS 2  
62.4%  
77%  
Slightly Thick  
Pointed  
EXCELLENT  
EXCELLENT  
NONE  
IGI LG638494224  
Comments: This Laboratory Grown Diamond was created by Chemical Vapor Deposition (CVD) growth process. Type IIa

**LABORATORY GROWN DIAMOND REPORT**

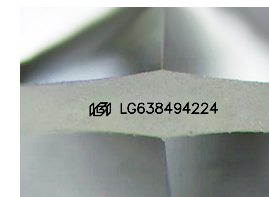
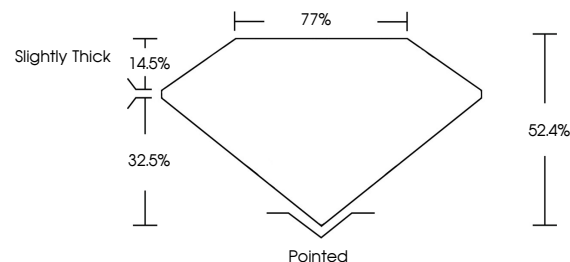
July 9, 2024  
IGI Report Number **LG638494224**  
Description **LABORATORY GROWN DIAMOND**  
Shape and Cutting Style **OCTAGONAL MIXED CUT**  
Measurements **8.93 X 8.72 X 4.57 MM**

**GRADING RESULTS**  
Carat Weight **3.51 CARATS**  
Color Grade **F**  
Clarity Grade **VVS 2**

**ADDITIONAL GRADING INFORMATION**  
Polish **EXCELLENT**  
Symmetry **EXCELLENT**  
Fluorescence **NONE**  
Inscription(s) **IGI LG638494224**

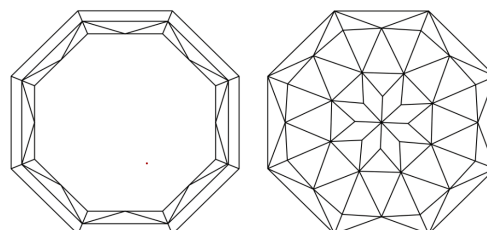
Comments: This Laboratory Grown Diamond was created by Chemical Vapor Deposition (CVD) growth process. Type IIa

**PROPORTIONS**



Sample Image Used

**CLARITY CHARACTERISTICS**



**KEY TO SYMBOLS**

Red symbols indicate internal characteristics.  
Green symbols indicate external characteristics.

**COLOR**

D E F G H I J Faint Very Light Light

**CLARITY**

IF	VS <sup>1-2</sup>	VS <sup>1-2</sup>	SI <sup>1-2</sup>	I <sup>1-3</sup>
Internally Flawless	Very Very Slightly Included	Very Slightly Included	Slightly Included	Included

