

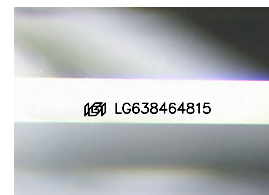
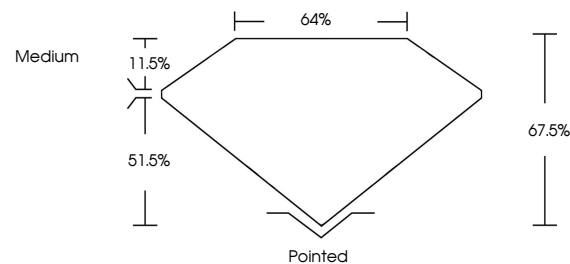


**ELECTRONIC COPY**

## LABORATORY GROWN DIAMOND REPORT

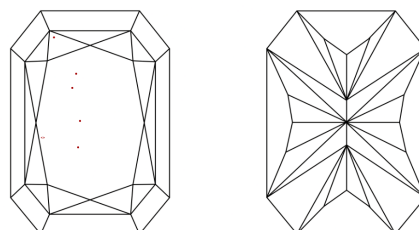
LG638464815  
Report verification at [igi.org](https://igi.org)

## PROPORTIONS



Sample Image Used

## CLARITY CHARACTERISTICS



### KEY TO SYMBOLS

Red symbols indicate internal characteristics.  
Green symbols indicate external characteristics.

## COLOR

D E F G H I J Faint Very Light Light

## CLARITY

IF	VVS <sup>1,2</sup>	VS <sup>1,2</sup>	SI <sup>1,2</sup>	I <sup>1,3</sup>
Internally Flawless	Very Very Slightly Included	Very Slightly Included	Slightly Included	Included

## LABORATORY GROWN DIAMOND REPORT



June 10, 2024

IGI Report Number **LG638464815**

Description **LABORATORY GROWN DIAMOND**

Shape and Cutting Style

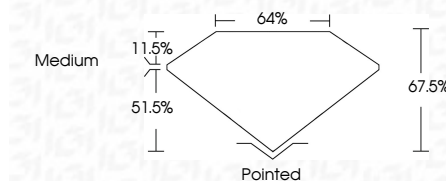
Measurements **8.03 X 5.60 X 3.78 MM**

## GRADING RESULTS

Carat Weight **1.46 CARAT**

Color Grade E

Clarity Grade VS 1



### ADDITIONAL GRADING INFORMATION

Polish **EXCELLENT**Symmetry **EXCELLENT**Fluorescence NONEInscription(s) **13** LG638464815

Comments: This Laboratory Grown Diamond was created by Chemical Vapor Deposition (CVD) growth process.  
Type IIa



© IGI 2020, International Gemological Institute

FD - 10 20

**www.igi.org**

THIS DOCUMENT WAS PRODUCED WITH THE FOLLOWING SECURITY MEASURES: SPECIAL DOCUMENT PAPER, INK SCREENS, WATERMARK BACKGROUND DESIGNS, HOLOGRAM AND OTHER SECURITY FEATURES NOT LISTED AND DO EXCEED DOCUMENT SECURITY INDUSTRY GUIDELINES

June 10, 2024	GI Report No. IG38944915	STU CORNEED RECT. MODIFIED BRILLIANT
1.46 CARAT	1.46 CARAT	
Color Grade	E	
Clarity Grade	VS 1	
Depth	67.5%	
Table	64%	
Grade	Medium	
Color	Pointed	
Symmetry	EXCELLENT	
Fluorescence	EXCELLENT	
Inscriptions(s)	NONE	
	6811ES38944915	

Comments:   
 Grown Diamond was created by Chemical Vapor Deposition (CVD) growth process.   
 type IIA