



ELECTRONIC COPY

LG638455392
Report verification at igi.org



June 18, 2024
IGI Report Number **LG638455392**
Description **LABORATORY GROWN DIAMOND**
Shape and Cutting Style **CUSHION MODIFIED BRILLIANT**
Measurements **7.26 X 5.87 X 4.12 MM**
GRADING RESULTS
Carat Weight **1.61 CARAT**
Color Grade **FANCY INTENSE YELLOW**
Clarity Grade **VVS 2**

LABORATORY GROWN DIAMOND REPORT

June 18, 2024
IGI Report Number **LG638455392**
Description **LABORATORY GROWN DIAMOND**
Shape and Cutting Style **CUSHION MODIFIED BRILLIANT**
Measurements **7.26 X 5.87 X 4.12 MM**

GRADING RESULTS

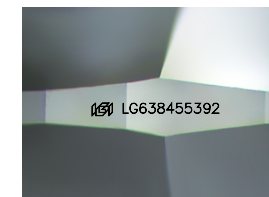
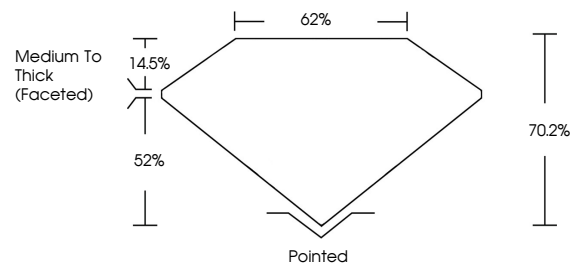
Carat Weight **1.61 CARAT**
Color Grade **FANCY INTENSE YELLOW**
Clarity Grade **VVS 2**

ADDITIONAL GRADING INFORMATION

Polish **VERY GOOD**
Symmetry **EXCELLENT**
Fluorescence **NONE**
Inscription(s) **LG638455392**

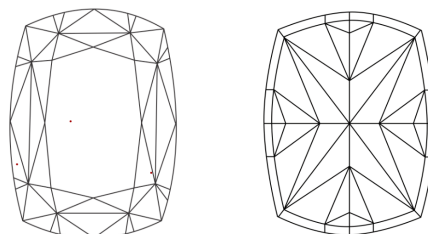
Comments: This Laboratory Grown Diamond was created by Chemical Vapor Deposition (CVD) growth process.

PROPORTIONS



Sample Image Used

CLARITY CHARACTERISTICS



KEY TO SYMBOLS

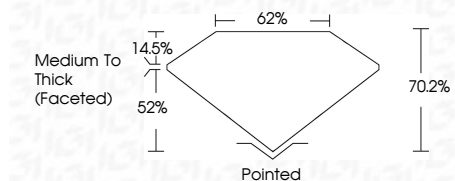
Red symbols indicate internal characteristics.
Green symbols indicate external characteristics.

COLOR

D E F G H I J Faint Very Light Light

CLARITY

| | | | | |
|---------------------|-----------------------------|------------------------|-------------------|------------------|
| IF | VVS ¹⁻² | VS ¹⁻² | SI ¹⁻² | I ¹⁻³ |
| Internally Flawless | Very Very Slightly Included | Very Slightly Included | Slightly Included | Included |



ADDITIONAL GRADING INFORMATION

Polish **VERY GOOD**
Symmetry **EXCELLENT**
Fluorescence **NONE**
Inscription(s) **LG638455392**
Comments: This Laboratory Grown Diamond was created by Chemical Vapor Deposition (CVD) growth process.



IGI



June 18, 2024
IGI Report No **LG638455392**
CUSHION MODIFIED BRILLIANT
Carat Weight **1.61 CARAT**
Color Grade **FANCY INTENSE YELLOW**
Clarity Grade **VVS 2**
Depth **70.2%**
Table **14.5%**
Girdle **Medium To Thick (Faceted)**
Culet **Pointed**
Polish **VERY GOOD**
Symmetry **EXCELLENT**
Fluorescence **NONE**
Inscription(s) **LG638455392**
Comments: This Laboratory Grown Diamond was created by Chemical Vapor Deposition (CVD) growth process.