



**ELECTRONIC COPY**

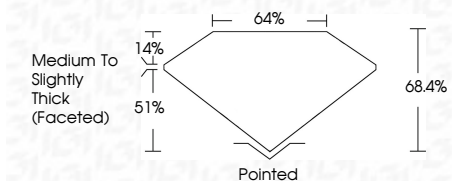
LG638446789  
Report verification at [igi.org](http://igi.org)



June 18, 2024  
IGI Report Number **LG638446789**  
Description **LABORATORY GROWN DIAMOND**  
Shape and Cutting Style **SQUARE CUSHION BRILLIANT**  
Measurements **5.86 X 5.79 X 3.96 MM**

**GRADING RESULTS**

Carat Weight **1.10 CARAT**  
Color Grade **FANCY INTENSE BLUE**  
Clarity Grade **VS 2**



**ADDITIONAL GRADING INFORMATION**

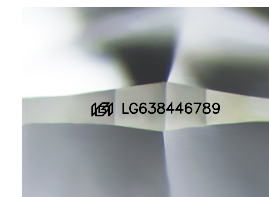
Polish **EXCELLENT**  
Symmetry **EXCELLENT**  
Fluorescence **NONE**  
Inscription(s) **IGI LG638446789**

Comments: This Laboratory Grown Diamond was created by Chemical Vapor Deposition (CVD) growth process. Indications of post-growth treatment.



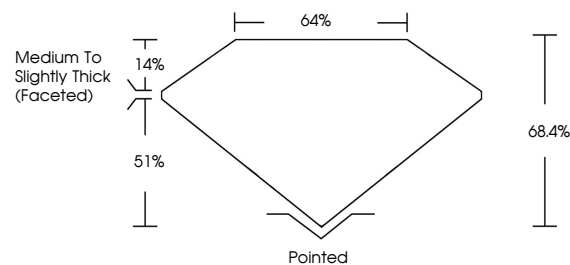
June 18, 2024  
IGI Report No **LG638446789**  
**SQUARE CUSHION BRILLIANT**  
Carat Weight **1.10 CARAT**  
Color Grade **FANCY INTENSE BLUE**  
Clarity Grade **VS 2**  
Depth **51%**  
Table **14%**  
Girdle **Medium to Slightly Thick (Faceted)**  
Culet **Pointed**  
Polish **EXCELLENT**  
Symmetry **EXCELLENT**  
Fluorescence **NONE**  
Inscription(s) **IGI LG638446789**

Comments: This Laboratory Grown Diamond was created by Chemical Vapor Deposition (CVD) growth process. Indications of post-growth treatment.

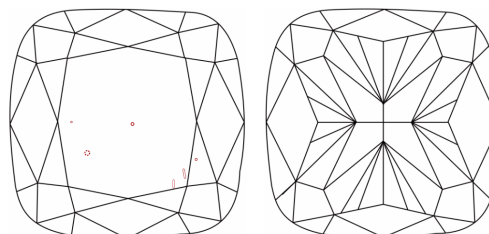


Sample Image Used

**PROPORTIONS**



**CLARITY CHARACTERISTICS**



**KEY TO SYMBOLS**

Red symbols indicate internal characteristics.  
Green symbols indicate external characteristics.

**COLOR**

D E F G H I J Faint Very Light Light

**CLARITY**

IF	VS <sup>1-2</sup>	VS <sup>1-2</sup>	SI <sup>1-2</sup>	I <sup>1-3</sup>
Internally Flawless	Very Very Slightly Included	Very Slightly Included	Slightly Included	Included

