



**ELECTRONIC COPY**

LG638443725  
Report verification at igi.org



June 21, 2024  
IGI Report Number **LG638443725**  
Description **LABORATORY GROWN DIAMOND**  
Shape and Cutting Style **SQUARE CUSHION MODIFIED BRILLIANT**  
Measurements **7.67 X 7.40 X 4.91 MM**  
**GRADING RESULTS**  
Carat Weight **2.55 CARATS**  
Color Grade **FANCY VIVID PINK**  
Clarity Grade **VVS 2**

June 21, 2024  
IGI Report Number **LG638443725**  
Description **LABORATORY GROWN DIAMOND**  
Shape and Cutting Style **SQUARE CUSHION MODIFIED BRILLIANT**  
Measurements **7.67 X 7.40 X 4.91 MM**

**GRADING RESULTS**

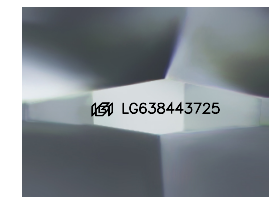
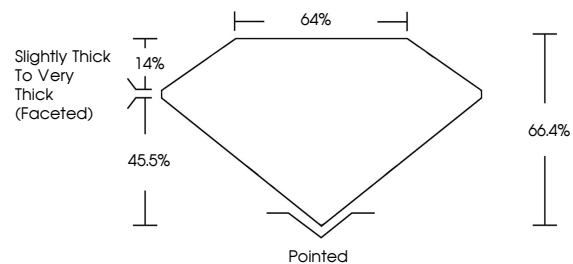
Carat Weight **2.55 CARATS**  
Color Grade **FANCY VIVID PINK**  
Clarity Grade **VVS 2**

**ADDITIONAL GRADING INFORMATION**

Polish **EXCELLENT**  
Symmetry **VERY GOOD**  
Fluorescence **SLIGHT**  
Inscription(s) **IGI LG638443725**

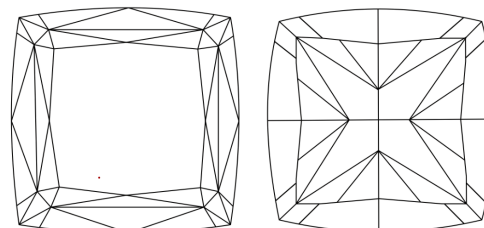
Comments: This Laboratory Grown Diamond was created by Chemical Vapor Deposition (CVD) growth process. Indications of post-growth treatment.

**PROPORTIONS**



Sample Image Used

**CLARITY CHARACTERISTICS**



**KEY TO SYMBOLS**

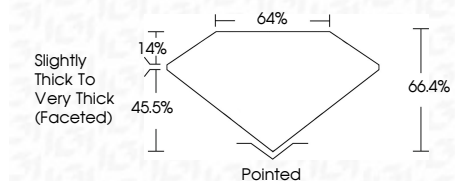
Red symbols indicate internal characteristics.  
Green symbols indicate external characteristics.

**COLOR**

D E F G H I J Faint Very Light Light

**CLARITY**

IF	VVS <sup>1-2</sup>	VS <sup>1-2</sup>	SI <sup>1-2</sup>	I <sup>1-3</sup>
Internally Flawless	Very Very Slightly Included	Very Slightly Included	Slightly Included	Included



**ADDITIONAL GRADING INFORMATION**

Polish **EXCELLENT**  
Symmetry **VERY GOOD**  
Fluorescence **SLIGHT**  
Inscription(s) **IGI LG638443725**  
Comments: This Laboratory Grown Diamond was created by Chemical Vapor Deposition (CVD) growth process. Indications of post-growth treatment.



June 21, 2024  
IGI Report No. **LG638443725**  
**SQUARE CUSHION MODIFIED BRILLIANT**  
7.67 X 7.40 X 4.91 MM  
2.55 CARATS  
FANCY VIVID PINK  
VVS 2  
66.4%  
45.5%  
14%  
Slightly Thick To Very Thick (Faceted)  
Pointed  
EXCELLENT  
VERY GOOD  
SLIGHT  
IGI LG638443725  
Comments: This Laboratory Grown Diamond was created by Chemical Vapor Deposition (CVD) growth process. Indications of post-growth treatment.