



**ELECTRONIC COPY**

## LABORATORY GROWN DIAMOND REPORT

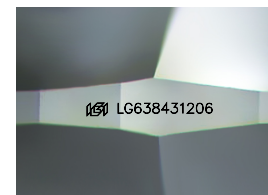
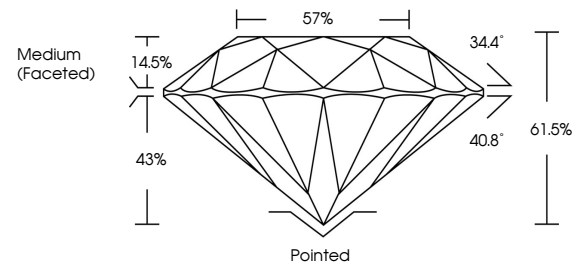
LG638431206  
Report verification at [igi.org](http://igi.org)

|                         |                          |
|-------------------------|--------------------------|
| June 6, 2024            |                          |
| IGI Report Number       | LG638431206              |
| Description             | LABORATORY GROWN DIAMOND |
| Shape and Cutting Style | ROUND BRILLIANT          |
| Measurements            | 7.13 - 7.16 X 4.40 MM    |
| GRADING RESULTS         |                          |
| Carat Weight            | 1.38 CARAT               |
| Color Grade             | D                        |
| Clarity Grade           | VVS 2                    |
| Cut Grade               | IDEAL                    |

### ADDITIONAL GRADING INFORMATION

|                |   |
|----------------|---|
| Polish         | EXCELLENT   |
| Symmetry       | EXCELLENT   |
| Fluorescence   | NONE  |
| Inscription(s) |  LG638431206 |

Comments: HEARTS & ARROWS  
This Laboratory Grown Diamond was created by  
Chemical Vapor Deposition (CVD) growth process.  
Type IIa



Sample Image Used

**COLOR**

D E F G H I J Faint Very Light Light

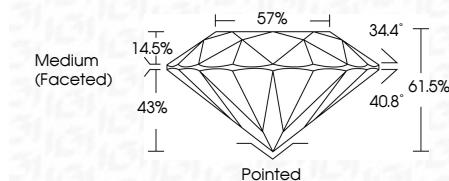
## CLARITY

| IF                  | VVS <sup>1,2</sup>          | VS <sup>1,2</sup>      | SI <sup>1,2</sup> | I <sup>1,3</sup> |
|---------------------|-----------------------------|------------------------|-------------------|------------------|
| Internally Flawless | Very Very Slightly Included | Very Slightly Included | Slightly Included | Included         |

## LABORATORY GROWN DIAMOND REPORT

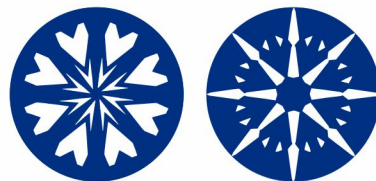


|                         |                          |
|-------------------------|--------------------------|
| June 6, 2024            |                          |
| IGI Report Number       | LG638431206              |
| Description             | LABORATORY GROWN DIAMOND |
| Shape and Cutting Style | ROUND BRILLIANT          |
| Measurements            | 7.13 - 7.16 X 4.40 MM    |
| GRADING RESULTS         |                          |
| Carat Weight            | 1.38 CARAT               |
| Color Grade             | D                        |
| Clarity Grade           | VVS 2                    |
| Cut Grade               | IDEAL                    |



### ADDITIONAL GRADING INFORMATION

|  |                             |
|--|-----------------------------|
| Polish   | EXCELLENT                   |
| Symmetry   | EXCELLENT                   |
| Fluorescence   | NONE                        |
| Inscription(s)   | <del>163</del> LG63843 1206 |
| Comments: HEARTS & ARROWS<br>This Laboratory Grown Diamond was created by<br>Chemical Vapor Deposition (CVD) growth process.<br>Type IIa |                             |



**www.igi.org**



© IGI 2020, International Gemological Institute

FD - 10 20



THIS DOCUMENT WAS PRODUCED WITH THE FOLLOWING SECURITY MEASURES: SPECIAL DOCUMENT PAPER, INK SCREENS, WATERMARK, BACKGROUND DESIGNS, HOLOGRAM AND OTHER SECURITY FEATURES NOT LISTED AND DO EXCEED DOCUMENT SECURITY INDUSTRY GUIDELINES

June 6, 2024  
IGI Report No LG638431206  
ROUND BRILLIANT

|                      |               |                  |
|----------------------|---------------|------------------|
| 7.13 - 7.16 X 4.0 MM | Carat Weight  | 1.38 CARAT       |
|                      | Color Grade   | D                |
|                      | Clarity Grade | VVS2             |
|                      | Cut Grade     | IDEAL            |
|                      | Depth         | 61.6%            |
|                      | Table         | 57%              |
|                      | Girdle        | Medium (Faceted) |
|                      | Culet         | Pointed          |
|                      | Polish        | EXCELLENT        |
|                      | Symmetry      | EXCELLENT        |
|                      | Fluorescence  | NONE             |
|                      | Report #      | 645125434206     |

**Comments:**  
HEARTS & ARROWS  
This Laboratory Grown Diamond was  
created by Chemical Vapor Deposition  
(CVD) growth process.