



ELECTRONIC COPY

LABORATORY GROWN DIAMOND REPORT

June 4, 2024
IGI Report Number LG637463693
Description LABORATORY GROWN DIAMOND
Shape and Cutting Style PRINCESS CUT
Measurements 7.28 X 7.14 X 4.97 MM

GRADING RESULTS

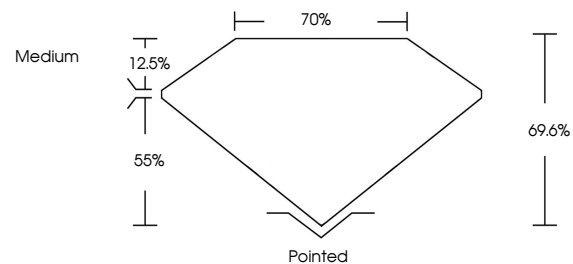
Carat Weight 2.25 CARATS
Color Grade F
Clarity Grade SI 1

ADDITIONAL GRADING INFORMATION

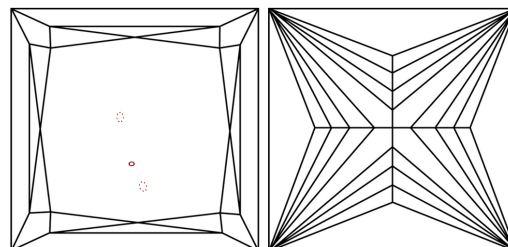
Polish EXCELLENT
Symmetry EXCELLENT
Fluorescence NONE
Inscription(s) IGI LG637463693

Comments: This Laboratory Grown Diamond was created by Chemical Vapor Deposition (CVD) growth process.
Type IIa

PROPORTIONS

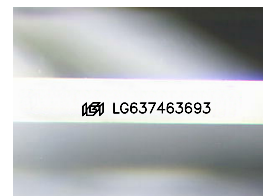


CLARITY CHARACTERISTICS



KEY TO SYMBOLS

Red symbols indicate internal characteristics.
Green symbols indicate external characteristics.



Sample Image Used

COLOR

D E F G H I J Faint Very Light Light

CLARITY

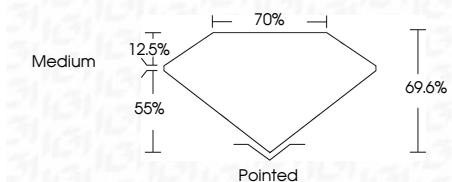
IF VS 1-2 VS 1-2 SI 1-2 I 1-3
Internally Flawless Very Very Slightly Included Very Slightly Included Slightly Included Included



June 4, 2024
IGI Report Number LG637463693
Description LABORATORY GROWN DIAMOND
Shape and Cutting Style PRINCESS CUT
Measurements 7.28 X 7.14 X 4.97 MM

GRADING RESULTS

Carat Weight 2.25 CARATS
Color Grade F
Clarity Grade SI 1



ADDITIONAL GRADING INFORMATION

Polish EXCELLENT
Symmetry EXCELLENT
Fluorescence NONE
Inscription(s) IGI LG637463693
Comments: This Laboratory Grown Diamond was created by Chemical Vapor Deposition (CVD) growth process.
Type IIa



IGI



June 4, 2024
IGI Report No LG637463693
PRINCESS CUT
2.25 CARATS
Carat Weight 2.25
Color Grade F
Clarity Grade SI 1
Depth 69.6%
Table 70%
Girdle Medium
Culet Pointed
Polish EXCELLENT
Symmetry EXCELLENT
Fluorescence NONE
Inscription(s) IGI LG637463693
Comments: This Laboratory Grown Diamond was created by Chemical Vapor Deposition (CVD) growth process.
Type IIa