



ELECTRONIC COPY

LG637461367
Report verification at igi.org



June 11, 2024
IGI Report Number **LG637461367**
Description **LABORATORY GROWN DIAMOND**
Shape and Cutting Style **EMERALD CUT**
Measurements **9.96 X 6.63 X 4.53 MM**
GRADING RESULTS
Carat Weight **2.95 CARATS**
Color Grade **FANCY INTENSE BLUE**
Clarity Grade **VS 2**

LABORATORY GROWN DIAMOND REPORT

June 11, 2024
IGI Report Number **LG637461367**
Description **LABORATORY GROWN DIAMOND**
Shape and Cutting Style **EMERALD CUT**
Measurements **9.96 X 6.63 X 4.53 MM**

GRADING RESULTS

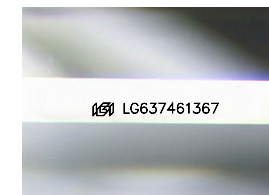
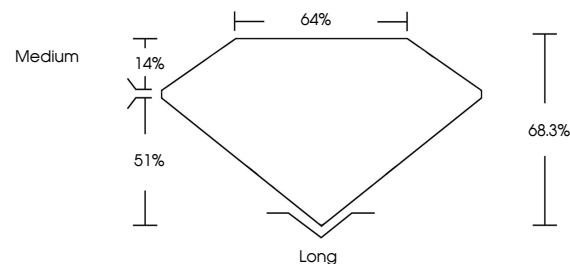
Carat Weight **2.95 CARATS**
Color Grade **FANCY INTENSE BLUE**
Clarity Grade **VS 2**

ADDITIONAL GRADING INFORMATION

Polish **EXCELLENT**
Symmetry **EXCELLENT**
Fluorescence **NONE**
Inscription(s) **LG637461367**

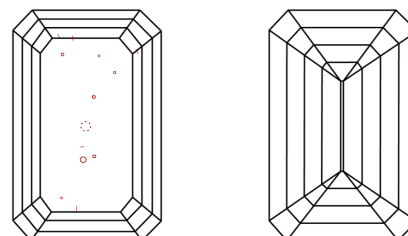
Comments: This Laboratory Grown Diamond was created by Chemical Vapor Deposition (CVD) growth process.
Indications of post-growth treatment.

PROPORTIONS



Sample Image Used

CLARITY CHARACTERISTICS



KEY TO SYMBOLS

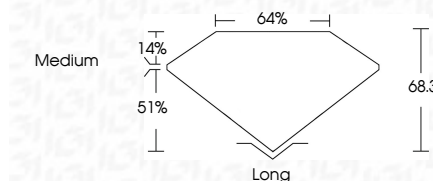
Red symbols indicate internal characteristics.
Green symbols indicate external characteristics.

COLOR

D E F G H I J Faint Very Light Light

CLARITY

IF	VS ¹⁻²	VS ¹⁻²	SI ¹⁻²	I ¹⁻³
Internally Flawless	Very Very Slightly Included	Very Slightly Included	Slightly Included	Included



ADDITIONAL GRADING INFORMATION

Polish **EXCELLENT**
Symmetry **EXCELLENT**
Fluorescence **NONE**
Inscription(s) **LG637461367**
Comments: This Laboratory Grown Diamond was created by Chemical Vapor Deposition (CVD) growth process.
Indications of post-growth treatment.



June 11, 2024
IGI Report No. **LG637461367**
EMERALD CUT
2.95 CARATS
Carat Weight **2.95 CARATS**
Color Grade **FANCY INTENSE BLUE**
Clarity Grade **VS 2**
Depth **68.3%**
Table **64%**
Girdle **Medium**
Culet **Long**
Polish **EXCELLENT**
Symmetry **EXCELLENT**
Fluorescence **NONE**
Inscription(s) **LG637461367**
Comments: This Laboratory Grown Diamond was created by Chemical Vapor Deposition (CVD) growth process.
Indications of post-growth treatment.