

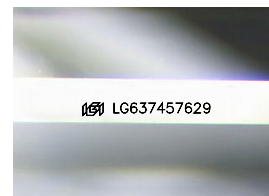
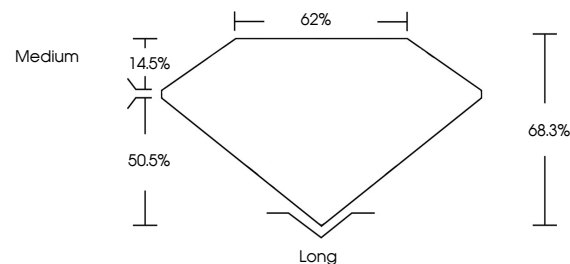


ELECTRONIC COPY

LABORATORY GROWN DIAMOND REPORT

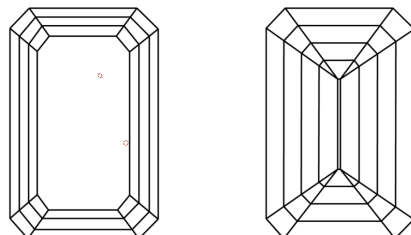
LG637457629
Report verification at igi.org

PROPORTIONS



Sample Image Used

CLARITY CHARACTERISTICS



KEY TO SYMBOLS

Red symbols indicate internal characteristics.
Green symbols indicate external characteristics.

COLOR

D E F G H I J Faint Very Light Light

CLARITY

IF	VVS ¹⁻²	VS ¹⁻²	SI ¹⁻²	I ¹⁻³
Internally Flawless	Very Very Slightly Included	Very Slightly Included	Slightly Included	Included



© IGI 2020, International Gemological Institute

FD - 10 20

www.igi.org

DIAMOND REPORT



June 3, 2024

IGI Report Number **LG637457629**

Description	LABORATORY GROWN DIAMOND
-------------	--------------------------

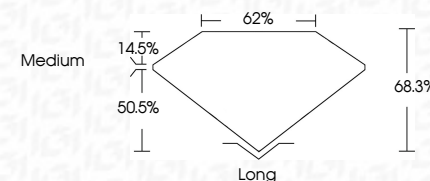
Shape and Cutting Style **EMERALD CUT**

Measurements **7.57 X 5.40 X 3.69 MM**

GRADING RESULTS

Carat Weight **1.53 CARAT**

Color Grade H

Clarity Grade **VVS 2**

ADDITIONAL GRADING INFORMATION

Polish **EXCELLENCE**Symmetry **EXCELLEN**Fluorescence NONIInscription(s) LG63745762

Comments: This Laboratory Grown Diamond was created by Chemical Vapor Deposition (CVD) growth process.
Type IIa



June 3, 2024
 GJ Report No LG637457629

GL Report No. LG357457/029	Carat Weight	1.53 CARAT
EMERALD CUT	Color Grade	H
	Clarity Grade	VVS 2
	Depth	68.3%
	Table	62%
	Girdle	Medium
	Culet	Long
	Polish	EXCELLENT
	Symmetry	EXCELLENT
	Fluorescence	NONE
		cert LG357457/029

Comments:
This Laboratory Grown Diamond was created by Chemical Vapor Deposition (CVD) growth process.