



ELECTRONIC COPY

LABORATORY GROWN DIAMOND REPORT

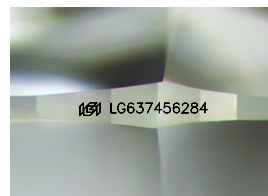
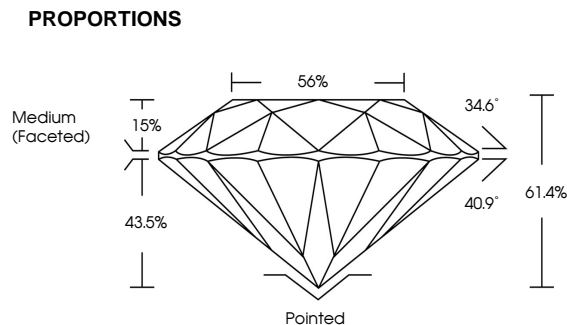
LG637456284
Report verification at lgi.org

June 1, 2024	
IGI Report Number	LG637456284
Description	LABORATORY GROWN DIAMOND
Shape and Cutting Style	ROUND BRILLIANT
Measurements	7.16 - 7.21 X 4.41 MM
GRADING RESULTS	
Carat Weight	1.38 CARAT
Color Grade	D
Clarity Grade	VVS 2
Cut Grade	IDEAL

ADDITIONAL GRADING INFORMATION

Polish	EXCELLENT
Symmetry	EXCELLENT
Fluorescence	NONE
Inscription(s)	 LG637456284

Comments: HEARTS & ARROWS
This Laboratory Grown Diamond was created by
Chemical Vapor Deposition (CVD) growth process.
Type IIa



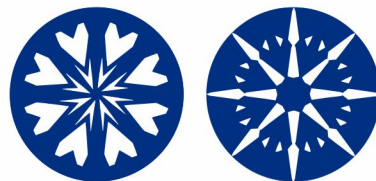
Sample Image Used

COLOR

D E F G H I J Faint Very Light Light

CLARITY

IF	WVS ¹⁻²	VS ¹⁻²	SI ¹⁻²	I ¹⁻³
Internally Flawless	Very Very Slightly Included	Very Slightly Included	Slightly Included	Included

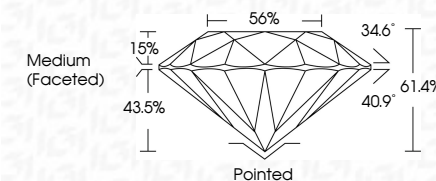


www.igi.org


DIAMOND REPORT



June 1, 2024	
IGI Report Number	LG637456284
Description	LABORATORY GROWN DIAMOND
Shape and Cutting Style	ROUND BRILLIANT
Measurements	7.16 - 7.21 X 4.41 MM
GRADING RESULTS	
Carat Weight	1.38 CARAT
Color Grade	D
Clarity Grade	VVS 2
Cut Grade	IDEAL



ADDITIONAL GRADING INFORMATION

Polish	EXCELLENT
Symmetry	EXCELLENT
Fluorescence	NONE
Inscription(s)	 LG637456284
<p>Comments: HEARTS & ARROWS</p> <p>This Laboratory Grown Diamond was created by Chemical Vapor Deposition (CVD) growth process.</p> <p>Type Ila</p>	



IG

© IGI 2020, International Gemological Institute

FD - 10 20



THIS DOCUMENT WAS PRODUCED WITH THE FOLLOWING SECURITY MEASURES: SPECIAL DOCUMENT PAPER, INK SCREENS, WATERMARK, BACKGROUND DESIGNS, HOLOGRAM AND OTHER SECURITY FEATURES NOT LISTED AND DO EXCEED DOCUMENT SECURITY INDUSTRY GUIDELINE

June 1, 2024
IGI Report No LG637456284
ROUND BRILLIANT

7.16 - 7.21 X 441 MM

1.16 - 1.21 X 4.41 MM

Color Grade **D**

Clarity Grade

Cut Grade	IDEAL
Depth	4.1 mm

Depth	61.4%
Table	56%

Girdle

100

Culet	Pointed
Polish	EXCELLENT

Symmetry

Fluorescence	Insrtion(s)	NONE
		1681 G6374F5284

Accession Number	Accession Date	Accession Description	Accession Number	Accession Date	Accession Description
129	1999/10/04	129	1999/10/04	129	1999/10/04

Comments:
HEARTS & ARROWS

This Laboratory Grown Diamond was created by Chemical Vapor Deposition

(CVD) growth process.
Type IIa