



ELECTRONIC COPY

LABORATORY GROWN DIAMOND REPORT

June 1, 2024  
IGI Report Number LG637453180  
Description LABORATORY GROWN DIAMOND  
Shape and Cutting Style EMERALD CUT  
Measurements 8.01 X 5.72 X 3.69 MM

GRADING RESULTS

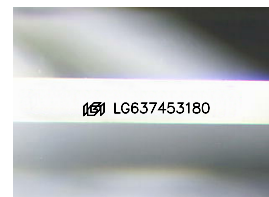
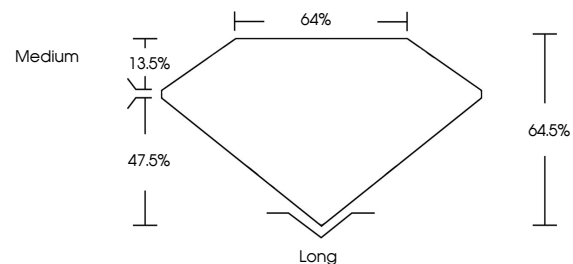
Carat Weight 1.69 CARAT  
Color Grade D  
Clarity Grade VVS 1

ADDITIONAL GRADING INFORMATION

Polish EXCELLENT  
Symmetry EXCELLENT  
Fluorescence NONE  
Inscription(s) IGI LG637453180

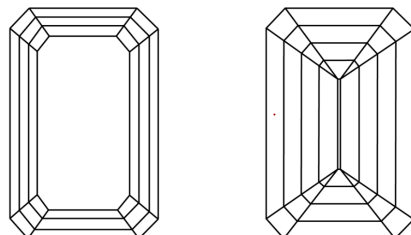
Comments: As Grown - No indication of post-growth treatment.  
This Laboratory Grown Diamond was created by High Pressure High Temperature (HPHT) growth process.  
Type II

PROPORTIONS



Sample Image Used

CLARITY CHARACTERISTICS



KEY TO SYMBOLS

Red symbols indicate internal characteristics.  
Green symbols indicate external characteristics.

COLOR

D E F G H I J Faint Very Light Light

CLARITY

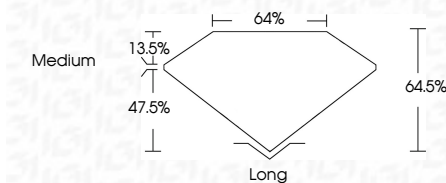
IF VS 1-2 VS 1-2 SI 1-2 I 1-3  
Internally Flawless Very Very Slightly Included Very Slightly Included Slightly Included Included



June 1, 2024  
IGI Report Number LG637453180  
Description LABORATORY GROWN DIAMOND  
Shape and Cutting Style EMERALD CUT  
Measurements 8.01 X 5.72 X 3.69 MM

GRADING RESULTS

Carat Weight 1.69 CARAT  
Color Grade D  
Clarity Grade VVS 1



ADDITIONAL GRADING INFORMATION

Polish EXCELLENT  
Symmetry EXCELLENT  
Fluorescence NONE  
Inscription(s) IGI LG637453180  
Comments: As Grown - No indication of post-growth treatment.  
This Laboratory Grown Diamond was created by High Pressure High Temperature (HPHT) growth process.  
Type II



IGI

June 1, 2024  
IGI Report No LG637453180  
EMERALD CUT  
1.69 CARAT D  
8.01 X 5.72 X 3.69 MM  
Carat Weight 1.69 CARAT  
Color Grade D  
Clarity Grade VVS 1  
Depth 47.5%  
Table 13.5%  
Girdle 47.5%  
Medium  
Long  
Polish EXCELLENT  
Symmetry EXCELLENT  
Fluorescence NONE  
Inscription(s) IGI LG637453180

Comments: As Grown - No indication of post-growth treatment.  
This Laboratory Grown Diamond was created by High Pressure High Temperature (HPHT) growth process.  
Type II