



ELECTRONIC COPY

LG637450831
Report verification at igi.org

DIAMOND REPORT



June 1, 2024

IGI Report Number LG637450831

Description **LABORATORY GROWN DIAMOND**Shape and Cutting Style **ROUND BRILLIANT**

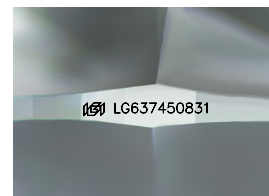
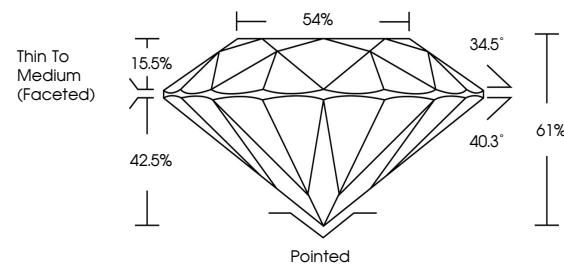
Measurements 8.55 - 8.56 X 5.22 MM

GRADING RESULTS

Carat Weight **2.32 CARATS**

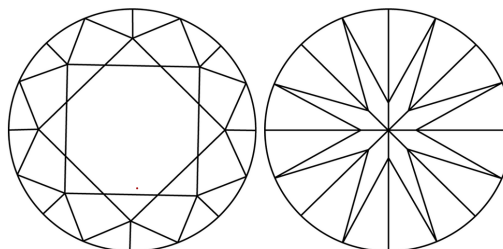
Color Grade EClarity Grade **VVS 1**

Cut Grade **IDEAL**



Sample Image Used

CLARITY CHARACTERISTICS



KEY TO SYMBOLS

Red symbols indicate internal characteristics.
Green symbols indicate external characteristics.

COLOR

D E F G H I J Faint Very Light Light

CLARITY

IF	VVS ^{1,2}	VS ^{1,2}	SI ^{1,2}	I ^{1,3}
Internally Flawless	Very Very Slightly Included	Very Slightly Included	Slightly Included	Included



© IGI 2020, International Gemological Institute

FD - 10 20



June 1, 2024
GI Report No LG637450831
ROUND BRILLIANT

3.55 - 8.56 X 5.22 MM	2.32 CARATS	F
Carat Weight		
Color Grade		

Color Grade	Clarity Grade	VS 1	IDEAL	41%
	Out Grade			

Depin	Thin To Medium (Faceted)	51%
Table		54%
Girdle		

Culet	Pointed
Polish	EXCELLENT
Symmetry	EXCELLENT

Fluorescence	NONE
Inscription(s)	151 LG637450831

Comments:
This Laboratory Grown Diamond was created by Chemical Vapor Deposition (CVD) growth process.