

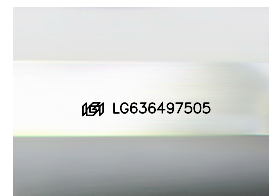
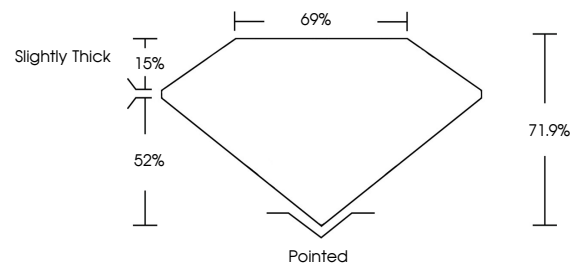


ELECTRONIC COPY

LABORATORY GROWN DIAMOND REPORT

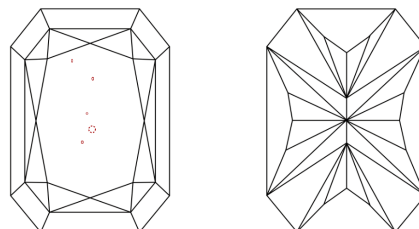
LG636497505
Report verification at lgi.org

PROPORTIONS



Sample Image Used

CLARITY CHARACTERISTICS



KEY TO SYMBOLS

Red symbols indicate internal characteristics.
Green symbols indicate external characteristics.

COLOR

D E F G H I J Faint Very Light Light

CLARITY

IF	VVS ¹⁻²	VS ¹⁻²	SI ¹⁻²	I ¹⁻³
Internally Flawless	Very Very Slightly Included	Very Slightly Included	Slightly Included	Included



© IGI 2020, International Gemological Institute

FD - 10 20

www.igi.org

DIAMOND REPORT



May 27, 2024

IGI Report Number **LG636497505**

Description	LABORATORY GROWN DIAMOND
-------------	--------------------------

Shape and Cutting Style

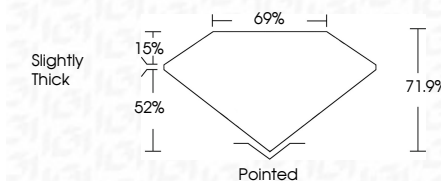
Measurements **6.40 X 5.13 X 3.69 MM**

GRADING RESULTS

Carat Weight 1.03 CARAT

Color Grade E

Clarity Grade VS 2



ADDITIONAL GRADING INFORMATION

Polish **EXCELLENT**Symmetry **EXCELLENT**Fluorescence **NONE**Inscription(s) LG636497505

Comments: This Laboratory Grown Diamond was created by Chemical Vapor Deposition (CVD) growth process.
Type IIa



May 27, 2024	Report No. LG56497595	1.03 CARAT
GJ REPORTED RECT. MODIFIED BRILLIANT		E
		Vs 2
		71.9%
		69%
		Slightly Thick
		Polished
		EXCELLENT
		EXCELLENT
		NONE
		lgj LG56497595

Comments:

The Laboratory Grown Diamond was
 confirmed by Laser Raman Spectroscopy
 (LRS) and Laser Raman Deposition
 (LRD) growth process.

Type Iia