

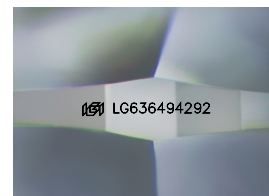
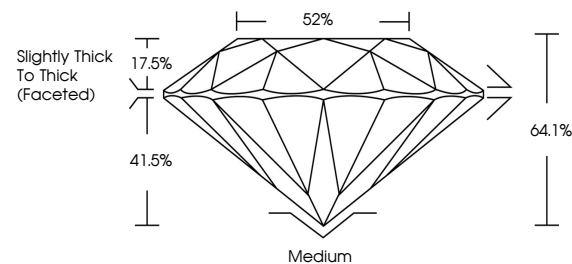


ELECTRONIC COPY

LABORATORY GROWN DIAMOND REPORT

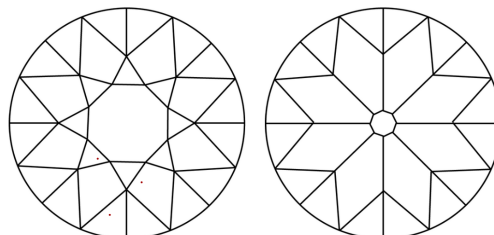
LG636494292
Report verification at igi.org

PROPORTIONS



Sample Image Used

CLARITY CHARACTERISTICS



KEY TO SYMBOLS

Red symbols indicate internal characteristics.
Green symbols indicate external characteristics.

COLOR

D E F G H I J Faint Very Light Light

CLARITY

IF	VVS ¹⁻²	VS ¹⁻²	SI ¹⁻²	I ¹⁻³
Internally Flawless	Very Very Slightly Included	Very Slightly Included	Slightly Included	Included



© IGI 2020, International Gemological Institute

FD - 10 20

www.igi.org

DIAMOND REPORT



June 3, 2024

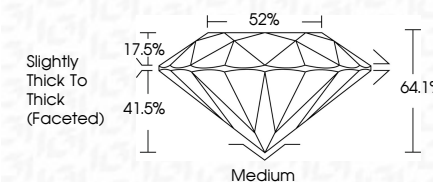
IGI Report Number **LG636494292**Description **LABORATORY GROWN DIAMOND**Shape and Cutting Style **OLD EUROPEAN CUT**

Measurements 7.81 X 7.85 X 5.02 MM

GRADING RESULTS

Carat Weight 2.01 CARATS

Color Grade

Clarity Grade WS 2

ADDITIONAL GRADING INFORMATION

Polish **EXCELLENT**Symmetry **EXCELLENT**Fluorescence **NONE**Inscription(s) **13** LG636494292

Comments: This Laboratory Grown Diamond was created by Chemical Vapor Deposition (CVD) growth process.
Type IIa



	June 9, 2024	
G Report No.	L6S36A4QZ22	
CUT EUROPEAN CUT		
Diamond Weight	2.01 CARATS	
Color Grade	D	
Clarity Grade	VVS 2	
Depth	64.1%	
Table	82%	
Girdle	Slightly Thick to Thick (Faceted)	
Polex	Medium	
Symmetry	EXCELLENT	
Fluorescence	EXCELLENT	
Inscriptions(s)	NONE	
	#BX LGSS36A4QZ22	

Comments:

The Laboratory Grown Diamond was
 created by Chemical Vapor Deposition
 (CVD) growth process.
 Type IIG