



ELECTRONIC COPY

LG636491345
Report verification at igi.org

LABORATORY GROWN DIAMOND REPORT

May 28, 2024
IGI Report Number **LG636491345**
Description **LABORATORY GROWN DIAMOND**
Shape and Cutting Style **MODIFIED OCTAGON STEP CUT**
Measurements **9.56 X 7.72 X 4.86 MM**

GRADING RESULTS

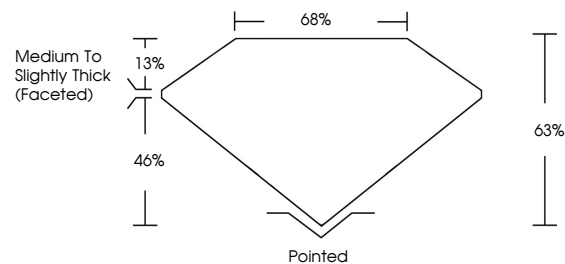
Carat Weight **2.24 CARATS**
Color Grade **F**
Clarity Grade **VVS 2**

ADDITIONAL GRADING INFORMATION

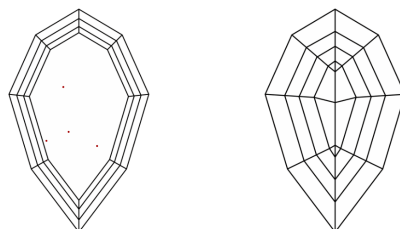
Polish **EXCELLENT**
Symmetry **VERY GOOD**
Fluorescence **NONE**
Inscription(s) **LG636491345**

Comments: This Laboratory Grown Diamond was created by Chemical Vapor Deposition (CVD) growth process.
Type IIa

PROPORTIONS

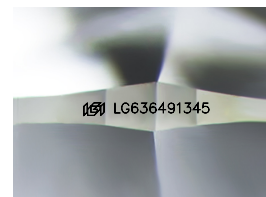


CLARITY CHARACTERISTICS



KEY TO SYMBOLS

Red symbols indicate internal characteristics.
Green symbols indicate external characteristics.



Sample Image Used

COLOR

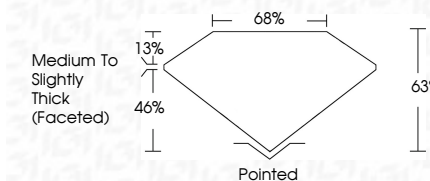
D E F G H I J Faint Very Light Light

CLARITY

IF	VS ¹⁻²	VS ¹⁻²	SI ¹⁻²	I ¹⁻³
Internally Flawless	Very Very Slightly Included	Very Slightly Included	Slightly Included	Included



May 28, 2024
IGI Report Number **LG636491345**
Description **LABORATORY GROWN DIAMOND**
Shape and Cutting Style **MODIFIED OCTAGON STEP CUT**
Measurements **9.56 X 7.72 X 4.86 MM**
GRADING RESULTS
Carat Weight **2.24 CARATS**
Color Grade **F**
Clarity Grade **VVS 2**



ADDITIONAL GRADING INFORMATION

Polish **EXCELLENT**
Symmetry **VERY GOOD**
Fluorescence **NONE**
Inscription(s) **LG636491345**
Comments: This Laboratory Grown Diamond was created by Chemical Vapor Deposition (CVD) growth process.
Type IIa



IGI

May 28, 2024
IGI Report No. LG636491345
MODIFIED OCTAGON STEP CUT

9.56 X 7.72 X 4.86 MM

2.24 CARATS
F

Carat Weight
Color Grade
Clarity Grade
Depth
Table
Girdle

VVS 2
F
63%
65%

Medium to Slightly Thick (Faceted)

Pointed
EXCELLENT
VERY GOOD
NONE

IGI LG636491345

Comments: This Laboratory Grown Diamond was created by Chemical Vapor Deposition (CVD) growth process.
Type IIa