



**ELECTRONIC COPY**

LG636479159  
Report verification at igi.org



June 1, 2024  
IGI Report Number **LG636479159**  
Description **LABORATORY GROWN DIAMOND**  
Shape and Cutting Style **EMERALD CUT**  
Measurements **12.99 X 8.84 X 6.00 MM**  
**GRADING RESULTS**  
Carat Weight **7.00 CARATS**  
Color Grade **FANCY INTENSE YELLOW**  
Clarity Grade **VS 2**

**LABORATORY GROWN DIAMOND REPORT**

June 1, 2024  
IGI Report Number **LG636479159**  
Description **LABORATORY GROWN DIAMOND**  
Shape and Cutting Style **EMERALD CUT**  
Measurements **12.99 X 8.84 X 6.00 MM**

**GRADING RESULTS**

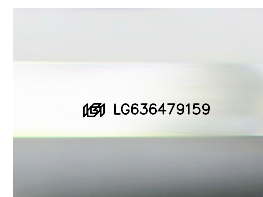
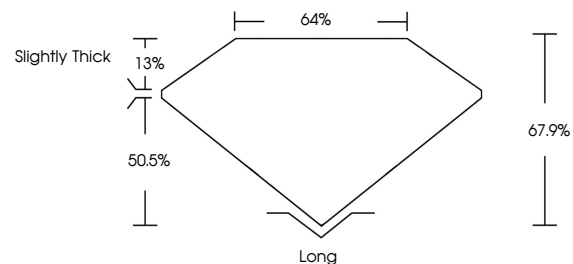
Carat Weight **7.00 CARATS**  
Color Grade **FANCY INTENSE YELLOW**  
Clarity Grade **VS 2**

**ADDITIONAL GRADING INFORMATION**

Polish **EXCELLENT**  
Symmetry **VERY GOOD**  
Fluorescence **NONE**  
Inscription(s) **IGI LG636479159**

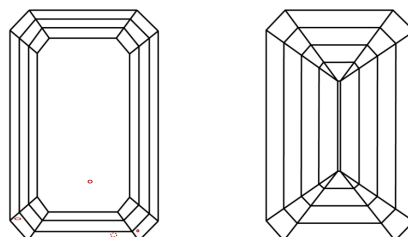
Comments: This Laboratory Grown Diamond was created by Chemical Vapor Deposition (CVD) growth process.

**PROPORTIONS**



Sample Image Used

**CLARITY CHARACTERISTICS**



**KEY TO SYMBOLS**

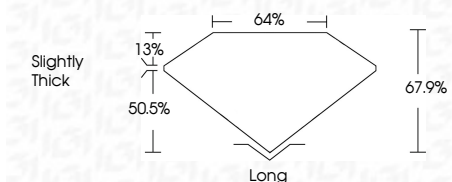
Red symbols indicate internal characteristics.  
Green symbols indicate external characteristics.

**COLOR**

D E F G H I J Faint Very Light Light

**CLARITY**

IF	VS <sup>1-2</sup>	VS <sup>1-2</sup>	SI <sup>1-2</sup>	I <sup>1-3</sup>
Internally Flawless	Very Very Slightly Included	Very Slightly Included	Slightly Included	Included



**ADDITIONAL GRADING INFORMATION**

Polish **EXCELLENT**  
Symmetry **VERY GOOD**  
Fluorescence **NONE**  
Inscription(s) **IGI LG636479159**  
Comments: This Laboratory Grown Diamond was created by Chemical Vapor Deposition (CVD) growth process.



**IGI**

June 1, 2024  
IGI Report No. **LG636479159**  
**EMERALD CUT**  
Carat Weight **7.00 CARATS**  
Color Grade **FANCY INTENSE YELLOW**  
Clarity Grade **VS 2**  
Depth **67.9%**  
Table **64%**  
Girdle **Slightly Thick**  
Culet **Long**  
Polish **EXCELLENT**  
Symmetry **VERY GOOD**  
Fluorescence **NONE**  
Inscription(s) **IGI LG636479159**  
Comments: This Laboratory Grown Diamond was created by Chemical Vapor Deposition (CVD) growth process.