



**ELECTRONIC COPY**

## LABORATORY GROWN DIAMOND REPORT

LG636468752  
Report verification at [igi.org](https://igi.org)

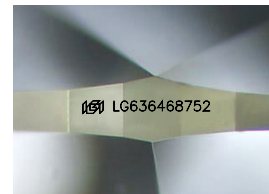
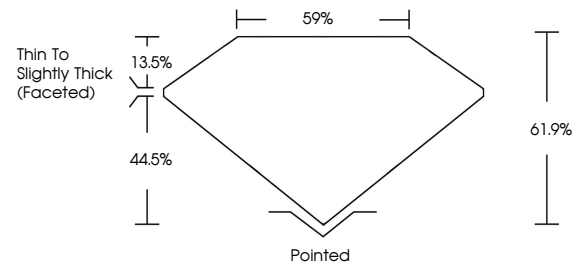
May 31, 2024	
IGI Report Number	LG636468752
Description	LABORATORY GROWN DIAMOND
Shape and Cutting Style	OVAL BRILLIANT
Measurements	10.58 X 7.09 X 4.39 MM
GRADING RESULTS	
Carat Weight	2.06 CARATS
Color Grade	FANCY VIVID GREEN
Clarity Grade	VS 1

### ADDITIONAL GRADING INFORMATION

Polish	EXCELLENT
Symmetry	EXCELLENT
Fluorescence	VERY SLIGHT
Inscription(s)	151 LG636468752

Comments: This Laboratory Grown Diamond was created by Chemical Vapor Deposition (CVD) growth process.  
Indications of post-growth treatment.

## PROPORTIONS



Sample Image Used

## COLOR

D E F G H I J Faint Very Light Light

## CLARITY

IF	VVS <sup>1-2</sup>	VS <sup>1-2</sup>	SI <sup>1-2</sup>	I <sup>1-3</sup>
Internally Flawless	Very Very Slightly Included	Very Slightly Included	Slightly Included	Included



© IGI 2020, International Gemological Institute

FD - 10 20

**www.igi.org**

## DIAMOND REPORT



May 31, 2024

IGI Report Number **LG636468752**

Description	LABORATORY GROWN DIAMOND
-------------	--------------------------

Shape and Cutting Style **OVAL BRILLIANT**

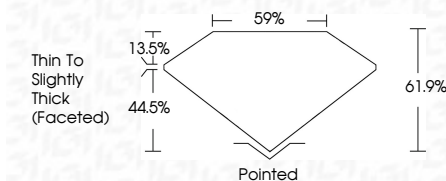
Measurements 10.58 X 7.09 X 4.39 MM

## GRADING RESULTS

Carat Weight **2.06 CARATS**

Color Grade **FANCY VIVID GREEN**

Clarity Grade VS 1



### ADDITIONAL GRADING INFORMATION

Polish **EXCELLENCE**Symmetry **EXCELLEN**

Fluorescence VERY SLIGHT

Inscription(s)  LG63646875

Comments: This Laboratory Grown Diamond was created by Chemical Vapor Deposition (CVD) growth process.  
Indications of post-growth treatment.



	May 31, 2024
	QI Report No LG93646792
	OVAL BRILLANT
	MMQL8 X 7.09 X 4.99 MM
	Carat Weight FANCY VIVID GREEN
	Color Grade VS 1
	Clarity Grade I <sub>1</sub>
	Depth 61.9%
	Girdle 95%
	Table Thin To slightly thick (faceted)
	Symmetry Excellent
	Fluorescence VERY SLIGHT
	Inscriptions(s) #8J LGS94646792
Comments:	
	Grown Diamond was created by Chemical Vapor Deposition (CVD) growth process.
	Indications of post-growth treatment.

**Comments:**  
This Laboratory Grown Diamond was created by Chemical Vapor Deposition (CVD) growth process.