



ELECTRONIC COPY

LG636453533 Report verification at igi.org



August 28, 2024 IGI Report Number LG636453533 Description LABORATORY GROWN DIAMOND Shape and Cutting Style PRINCESS CUT Measurements 5.78 X 5.72 X 4.24 MM GRADING RESULTS Carat Weight 1.15 CARAT Color Grade E Clarity Grade VVS 2

August 28, 2024 IGI Report Number LG636453533 Description LABORATORY GROWN DIAMOND Shape and Cutting Style PRINCESS CUT Measurements 5.78 X 5.72 X 4.24 MM

GRADING RESULTS

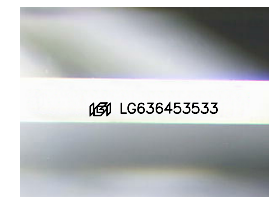
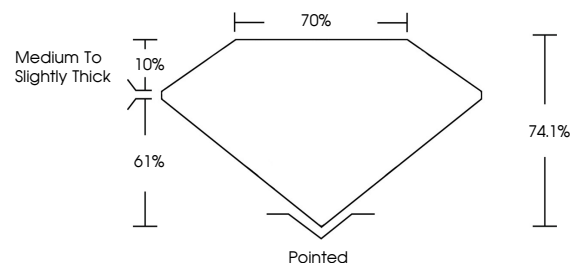
Carat Weight 1.15 CARAT Color Grade E Clarity Grade VVS 2

ADDITIONAL GRADING INFORMATION

Polish EXCELLENT Symmetry EXCELLENT Fluorescence NONE Inscription(s) IGI LG636453533

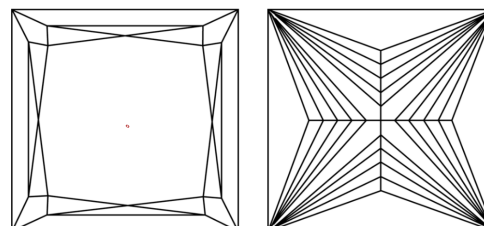
Comments: This Laboratory Grown Diamond was created by Chemical Vapor Deposition (CVD) growth process. Type IIa

PROPORTIONS



Sample Image Used

CLARITY CHARACTERISTICS



KEY TO SYMBOLS

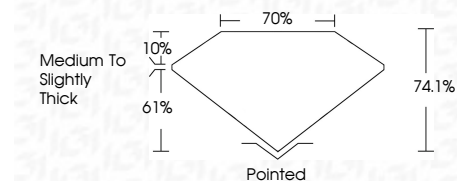
Red symbols indicate internal characteristics. Green symbols indicate external characteristics.

COLOR

D E F G H I J Faint Very Light Light

CLARITY

IF WVS 1-2 VS 1-2 SI 1-2 I 1-3 Internally Flawless Very Very Slightly Included Very Slightly Included Slightly Included Included



ADDITIONAL GRADING INFORMATION

Polish EXCELLENT Symmetry EXCELLENT Fluorescence NONE Inscription(s) IGI LG636453533 Comments: This Laboratory Grown Diamond was created by Chemical Vapor Deposition (CVD) growth process. Type IIa



August 28, 2024 IGI Report No LG636453533 PRINCESS CUT 1.15 CARAT E VVS 2 5.78 X 5.72 X 4.24 MM 74.1% 70% Medium to Slightly Thick Pointed EXCELLENT EXCELLENT NONE NONE IGI LG636453533 Comments: This Laboratory Grown Diamond was created by Chemical Vapor Deposition (CVD) growth process. Type IIa