



**ELECTRONIC COPY**

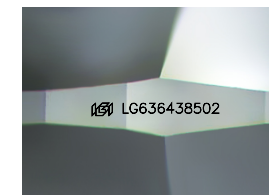
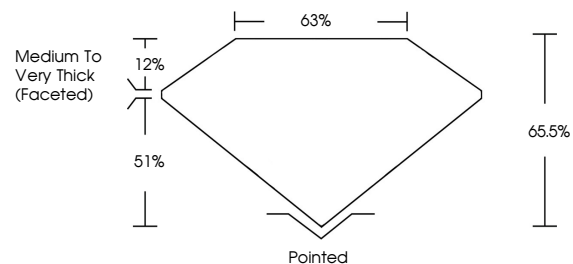
LG636438502  
Report verification at [igi.org](http://igi.org)



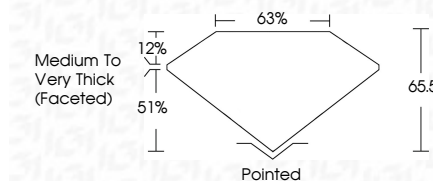
June 14, 2024  
IGI Report Number **LG636438502**  
Description **LABORATORY GROWN DIAMOND**  
Shape and Cutting Style **CUSHION BRILLIANT**  
Measurements **15.60 X 10.72 X 7.02 MM**  
**GRADING RESULTS**  
Carat Weight **10.14 CARATS**  
Color Grade **FANCY PINK**  
Clarity Grade **VS 2**

June 14, 2024  
IGI Report Number **LG636438502**  
Description **LABORATORY GROWN DIAMOND**  
Shape and Cutting Style **CUSHION BRILLIANT**  
Measurements **15.60 X 10.72 X 7.02 MM**  
**GRADING RESULTS**  
Carat Weight **10.14 CARATS**  
Color Grade **FANCY PINK**  
Clarity Grade **VS 2**

**PROPORTIONS**



Sample Image Used



**ADDITIONAL GRADING INFORMATION**

Polish **EXCELLENT**  
Symmetry **EXCELLENT**  
Fluorescence **STRONG**  
Inscription(s) **IGI LG636438502**

Comments: This Laboratory Grown Diamond was created by Chemical Vapor Deposition (CVD) growth process. Indications of post-growth treatment.

**ADDITIONAL GRADING INFORMATION**

Polish **EXCELLENT**  
Symmetry **EXCELLENT**  
Fluorescence **STRONG**  
Inscription(s) **IGI LG636438502**  
Comments: This Laboratory Grown Diamond was created by Chemical Vapor Deposition (CVD) growth process. Indications of post-growth treatment.

**COLOR**

D E F G H I J Faint Very Light Light

**CLARITY**

IF	VS <sup>1-2</sup>	VS <sup>1-2</sup>	SI <sup>1-2</sup>	I <sup>1-3</sup>
Internally Flawless	Very Very Slightly Included	Very Slightly Included	Slightly Included	Included



**IGI**



June 14, 2024  
IGI Report No **LG636438502**  
**CUSHION BRILLIANT**  
**10.14 CARATS**  
Carat Weight  
Color Grade **FANCY PINK**  
Clarity Grade **VS 2**  
Depth **65.5%**  
Table **63%**  
Girdle **Medium to Very Thick (Faceted)**  
Culet **Pointed**  
Polish **EXCELLENT**  
Symmetry **EXCELLENT**  
Fluorescence **STRONG**  
Inscription(s) **IGI LG636438502**

Comments: This Laboratory Grown Diamond was created by Chemical Vapor Deposition (CVD) growth process. Indications of post-growth treatment.