



ELECTRONIC COPY

LABORATORY GROWN DIAMOND REPORT

July 5, 2024
IGI Report Number LG636427369
Description LABORATORY GROWN DIAMOND
Shape and Cutting Style FREEFORM MODIFIED BRILLIANT
Measurements 8.40 X 5.71 X 3.28 MM

GRADING RESULTS

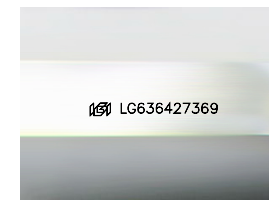
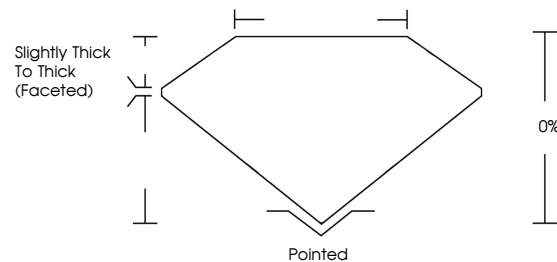
Carat Weight 1.02 CARAT
Color Grade FANCY INTENSE YELLOW
Clarity Grade VS 1

ADDITIONAL GRADING INFORMATION

Polish EXCELLENT
Symmetry VERY GOOD
Fluorescence NONE
Inscription(s) LG636427369

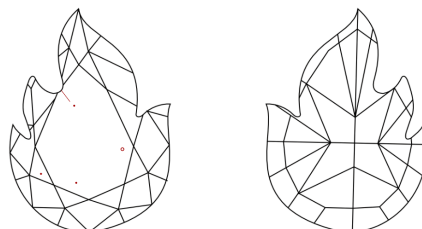
Comments: This Laboratory Grown Diamond was created by Chemical Vapor Deposition (CVD) growth process.

PROPORTIONS



Sample Image Used

CLARITY CHARACTERISTICS



KEY TO SYMBOLS

Red symbols indicate internal characteristics.
Green symbols indicate external characteristics.

COLOR

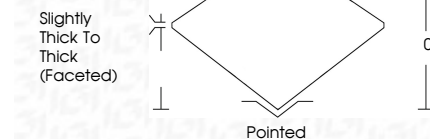
D E F G H I J Faint Very Light Light

CLARITY

IF VS 1-2 VS 1-2 SI 1-2 I 1-3
Internally Flawless Very Very Slightly Included Very Slightly Included Slightly Included Included



July 5, 2024
IGI Report Number LG636427369
Description LABORATORY GROWN DIAMOND
Shape and Cutting Style FREEFORM MODIFIED BRILLIANT
Measurements 8.40 X 5.71 X 3.28 MM
GRADING RESULTS
Carat Weight 1.02 CARAT
Color Grade FANCY INTENSE YELLOW
Clarity Grade VS 1



ADDITIONAL GRADING INFORMATION

Polish EXCELLENT
Symmetry VERY GOOD
Fluorescence NONE
Inscription(s) LG636427369
Comments: This Laboratory Grown Diamond was created by Chemical Vapor Deposition (CVD) growth process.



Summary of report details including date, report number, description, measurements, grading results, and additional information.

Comments: This Laboratory Grown Diamond was created by Chemical Vapor Deposition (CVD) growth process.