

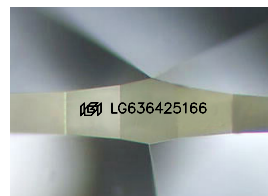
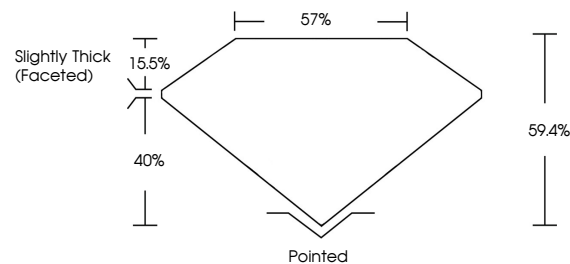


**ELECTRONIC COPY**

## LABORATORY GROWN DIAMOND REPORT

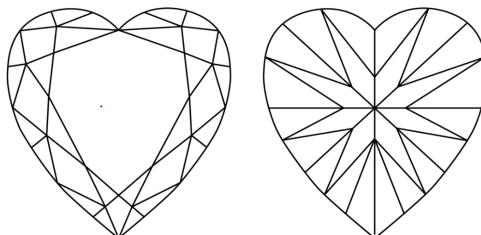
LG636425166  
Report verification at [igi.org](https://igi.org)

## PROPORTIONS



Sample Image Used

## CLARITY CHARACTERISTICS



## KEY TO SYMBOLS

Red symbols indicate internal characteristics.  
Green symbols indicate external characteristics.

## COLOR

D E F G H I J Faint Very Light Light

## CLARITY

IF	VVS <sup>1-2</sup>	VS <sup>1-2</sup>	SI <sup>1-2</sup>	I <sup>1-3</sup>
Internally Flawless	Very Very Slightly Included	Very Slightly Included	Slightly Included	Included



© IGI 2020, International Gemological Institute

FD - 10 20

## DIAMOND REPORT



May 29, 2024

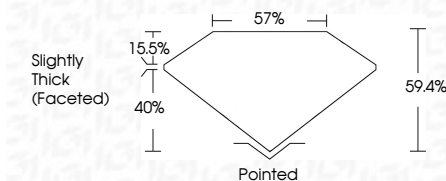
IGI Report Number **LG636425166**Description **LABORATORY GROWN DIAMOND**Shape and Cutting Style **HEART BRILLIANT**

Measurements 7.91 X 9.33 X 5.54 MM

## GRADING RESULTS

Carat Weight **2.45 CARATS**

Color Grade D

Clarity Grade WS 2

### ADDITIONAL GRADING INFORMATION

Polish **EXCELLENT**Symmetry **EXCELLENT**Fluorescence **NONE**Inscription(s)  LG636425166

Comments: This Laboratory Grown Diamond was created by Chemical Vapor Deposition (CVD) growth process.  
Type IIa



May 29, 2024	
GI Report No LG364025166	
HEART BRILLIANT	
191 X 9.33 X 6.54 MM	
Coral Weight	2.45 CARATS
Color Grade	D
Clarity Grade	VVS 2
Depth	59.4%
Table	57%
Girdle	Slightly Thick (Faceted)
Quest	Painted
Push	EXCELLENT
Symmetry	EXCELLENT
Fluorescence	NONE
Inscriptions(s)	1691 LG364025166
Comments:	
Created by Chemist	
Manufactured by Laboratory Growth Diamond was created by Chemical Vapor Deposition (CVD) growth process.	
Type IIG	