

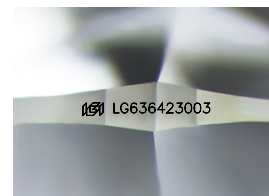
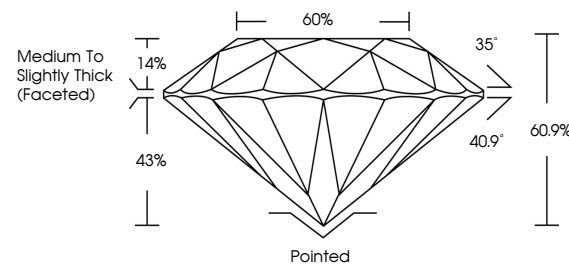


ELECTRONIC COPY

LABORATORY GROWN DIAMOND REPORT

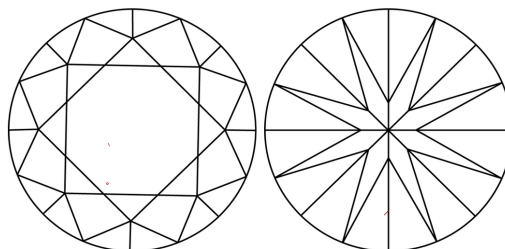
LG636423003
Report verification at igi.org

PROPORTIONS



Sample Image Used

CLARITY CHARACTERISTICS



KEY TO SYMBOLS

Red symbols indicate internal characteristics.
Green symbols indicate external characteristics.

COLOR

D E F G H I J Faint Very Light Light

CLARITY

IF	VVS ¹⁻²	VS ¹⁻²	SI ¹⁻²	I ¹⁻³
Internally Flawless	Very Very Slightly Included	Very Slightly Included	Slightly Included	Included



© IGI 2020, International Gemological Institute

FD - 10 20

www.igi.org

DIAMOND REPORT



May 30, 2024

IGI Report Number **LG636423003**Description **LABORATORY GROWN DIAMOND**Shape and Cutting Style **ROUND BRILLIANT**

Measurements 7.62 - 7.66 X 4.65 MM

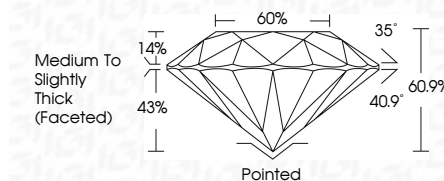
GRADING RESULTS

Carat Weight 1.69 CARAT

Color Grade E

Clarity Grade VS 1

Cut Grade **IDEAL**



ADDITIONAL GRADING INFORMATION

Polish EXCELLENT

Symmetry **EXCELLENT**Fluorescence **NONE**Inscription(s) LG636423003

Comments: This Laboratory Grown Diamond was created by Chemical Vapor Deposition (CVD) growth process.
Type IIa



May 30, 2024	GI Report No LG56423003
ROUND BRILLIANT	
1.69 CARAT	
E	
VSI 1	
IDEAL	
60.9%	
60%	
Medium to Slightly Thick Facet(s)	
Pointed	
EXCELLENT	
EXCELLENT	
NONE	
#69 LG56423003	
Comments:	
This Laboratory Grown Diamond was created by Chemical Vapor Deposition (CVD) growth process.	
Type IIa	