

## LABORATORY GROWN DIAMOND REPORT

|                         |                          |
|-------------------------|--------------------------|
| May 30, 2024            |                          |
| IGI Report Number       | LG636422928              |
| Description             | LABORATORY GROWN DIAMOND |
| Shape and Cutting Style | ROUND BRILLIANT          |
| Measurements            | 6.57 - 6.59 X 3.96 MM    |

## GRADING RESULTS

|               |            |
|---------------|------------|
| Carat Weight  | 1.06 CARAT |
| Color Grade   | E          |
| Clarity Grade | VVS 1      |
| Cut Grade     | IDEAL      |

### ADDITIONAL GRADING INFORMATION

|                |                |
|----------------|----------------|
| Polish         | EXCELLENT      |
| Symmetry       | EXCELLENT      |
| Fluorescence   | NONE           |
| Inscription(s) | 15 LG636422928 |

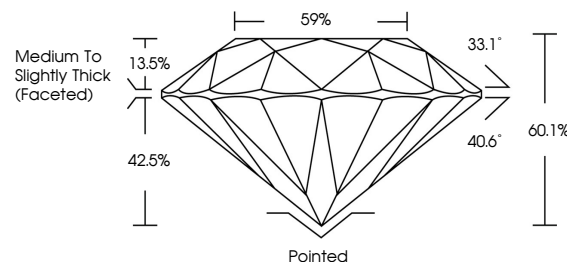
Comments: As Grown - No indication of post-growth treatment.

This Laboratory Grown Diamond was created by High Pressure High Temperature (HPHT) growth process.

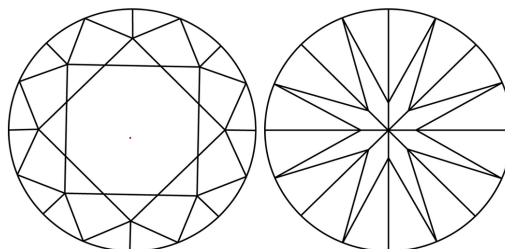
## Type II

LG636422928  
Report verification at [lgi.org](https://lgi.org)

## PROPORTIONS

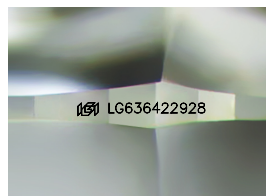


## CLARITY CHARACTERISTICS



## KEY TO SYMBOLS

Red symbols indicate internal characteristics.  
Green symbols indicate external characteristics.



Sample Image Used

## COLOR

D E F G H I J Faint Very Light Light

## CLARITY

| IF                  | VVS <sup>1,2</sup>          | VS <sup>1,2</sup>      | SI <sup>1,2</sup> | I <sup>1,3</sup> |
|---------------------|-----------------------------|------------------------|-------------------|------------------|
| Internally Flawless | Very Very Slightly Included | Very Slightly Included | Slightly Included | Included         |



© IGI 2020, International Gemological Institute

FD - 10 20

**www.igi.org**

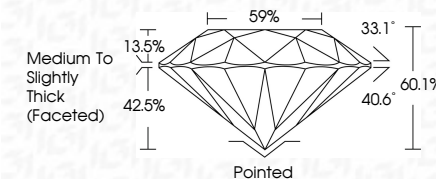
DIAMOND REPORT



|                         |                          |
|-------------------------|--------------------------|
| May 30, 2024            |                          |
| IGI Report Number       | LG636422928              |
| Description             | LABORATORY GROWN DIAMOND |
| Shape and Cutting Style | ROUND BRILLIANT          |
| Measurements            | 6.57 - 6.59 X 3.96 MM    |

## GRADING RESULTS

|               |            |
|---------------|------------|
| Carat Weight  | 1.06 CARAT |
| Color Grade   | E          |
| Clarity Grade | VVS 1      |
| Cut Grade     | IDEAL      |



### ADDITIONAL GRADING INFORMATION

|                |                  |
|----------------|------------------|
| Polish         | EXCELLENT        |
| Symmetry       | EXCELLENT        |
| Fluorescence   | NONE             |
| Inscription(s) | (16) LG636422928 |

Comments: As Grown - No indication of post-growth treatment.

This Laboratory Grown Diamond was created by High Pressure High Temperature (HPHT) growth process.



IG

|                 |                       |                                  |
|-----------------|-----------------------|----------------------------------|
| May 30, 2024    | Report No. L653642928 | ROUND BRILLIANT                  |
| G               | 1.67 - 1.69 X 3.96 MM | 1.06 CARAT                       |
| Color           | Color Weight          | E                                |
| Clear Grade     | Clarity Grade         | VVS 1                            |
| Cur Grade       | Cur Grade             | IDEAL                            |
| Depth           | Depth                 | 60.1%                            |
| Table           | Table                 | 59%                              |
| Grade           | Grade                 | Medium to slightly Thick Faceted |
| Culet           | Culet                 | Pointed                          |
| Polish          | Polish                | EXCELLENT                        |
| Symmetry        | Symmetry              | EXCELLENT                        |
| Fluorescence    | Fluorescence          | NONE                             |
| Inscriptions(s) | Inscriptions(s)       | 681 L653642928                   |

Comments: As Grown - No indication of post-growth treatment.

This Laboratory Grown Diamond was created by High Pressure High Temperature (HPHT) growth process.