



**ELECTRONIC COPY**

## LABORATORY GROWN DIAMOND REPORT

June 4, 2024	
IGI Report Number	LG636422489
Description	LABORATORY GROWN DIAMOND
Shape and Cutting Style	OVAL BRILLIANT
Measurements	9.76 X 7.27 X 4.59 MM

## GRADING RESULTS

Carat Weight	2.06 CARATS
Color Grade	FANCY VIVID BLUE
Clarity Grade	VS 1

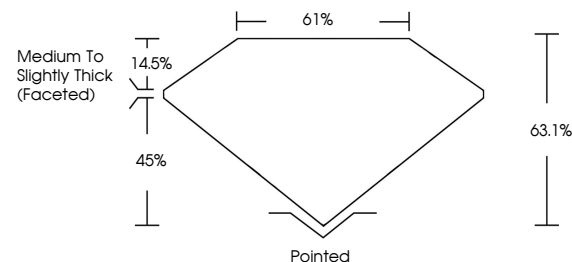
### ADDITIONAL GRADING INFORMATION

Polish	EXCELLENT
Symmetry	EXCELLENT
Fluorescence	NONE
Inscription(s)	151 LG636422489

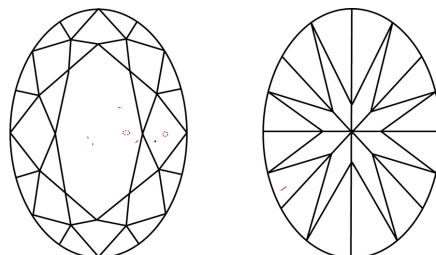
Comments: This Laboratory Grown Diamond was created by Chemical Vapor Deposition (CVD) growth process.  
Indications of post-growth treatment.

LG636422489  
Report verification at [lgi.org](https://lgi.org)

## PROPORTIONS

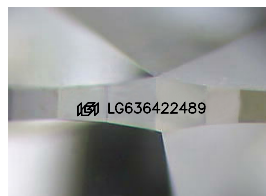


## CLARITY CHARACTERISTICS



### KEY TO SYMBOLS

Red symbols indicate internal characteristics.  
Green symbols indicate external characteristics.



Sample Image Used

## COLOR

D E F G H I J Faint Very Light Light

## CLARITY

IF	VVS <sup>1,2</sup>	VS <sup>1,2</sup>	SI <sup>1,2</sup>	I <sup>1,3</sup>
Internally Flawless	Very Very Slightly Included	Very Slightly Included	Slightly Included	Included



© IGI 2020, International Gemological Institute

FD - 10 20

**www.igi.org**

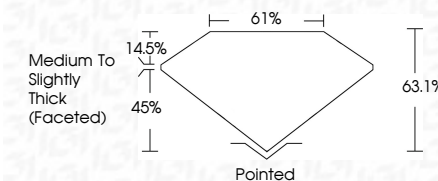
## DIAMOND REPORT



June 4, 2024	
IGI Report Number	LG636422489
Description	LABORATORY GROWN DIAMOND
Shape and Cutting Style	OVAL BRILLIANT
Measurements	9.76 X 7.27 X 4.59 MM

## GRADING RESULTS

Carat Weight	2.06 CARATS
Color Grade	FANCY VIVID BLUE
Clarity Grade	VS 1



### ADDITIONAL GRADING INFORMATION

Polish	EXCELLENT
Symmetry	EXCELLENT
Fluorescence	NONE
Inscription(s)	 LG636422489

Comments: This Laboratory Grown Diamond was created by Chemical Vapor Deposition (CVD) growth process.  
Indications of post-growth treatment.



June 4, 2024  
GI Report No LG636422489  
COVAL BRILLIANT

<b>7.75 X 7.27 X 4.59 MM</b>	
Carat Weight	2.06 CARATS
Color Grade	FANCY VIVID BLUE
Clarity Grade	VS 1
Depth	63.1%
Table	61%
Girdle	Medium To Slightly Thick (preferred)
Culet	Pointed
Polish	EXCELLENT
Symmetry	EXCELLENT
Fluorescence	NONE
Report Number(s)	4841155642722140

**Comments:**  
This Laboratory Grown Diamond was created by Chemical Vapor Deposition (CVD) growth process.  
indications of post-growth treatment.