



ELECTRONIC COPY

LG636418790
Report verification at igi.org



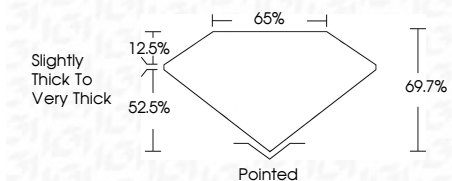
June 7, 2024
IGI Report Number LG636418790
Description LABORATORY GROWN DIAMOND

Shape and Cutting Style CUT CORNERED RECTANGULAR MODIFIED BRILLIANT

Measurements 7.34 X 5.41 X 3.77 MM

GRADING RESULTS

Carat Weight 1.42 CARAT
Color Grade FANCY INTENSE YELLOW
Clarity Grade VVS 2



ADDITIONAL GRADING INFORMATION

Polish EXCELLENT
Symmetry EXCELLENT
Fluorescence NONE
Inscription(s) LG636418790

Comments: This Laboratory Grown Diamond was created by Chemical Vapor Deposition (CVD) growth process.



June 7, 2024
IGI Report No LG636418790
CUT CORNERED RECT. MODIFIED BRILLIANT
7.34 X 5.41 X 3.77 MM
1.42 CARAT
FANCY INTENSE YELLOW
VVS 2
69.7%
Slightly Thick To Very Thick
Pointed
EXCELLENT
EXCELLENT
NONE
LG636418790

Comments: This Laboratory Grown Diamond was created by Chemical Vapor Deposition (CVD) growth process.

LABORATORY GROWN DIAMOND REPORT

June 7, 2024
IGI Report Number LG636418790
Description LABORATORY GROWN DIAMOND
Shape and Cutting Style CUT CORNERED RECTANGULAR MODIFIED BRILLIANT
Measurements 7.34 X 5.41 X 3.77 MM

GRADING RESULTS

Carat Weight 1.42 CARAT
Color Grade FANCY INTENSE YELLOW
Clarity Grade VVS 2

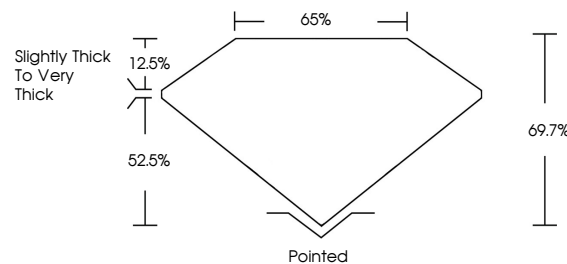
ADDITIONAL GRADING INFORMATION

Polish EXCELLENT
Symmetry EXCELLENT
Fluorescence NONE

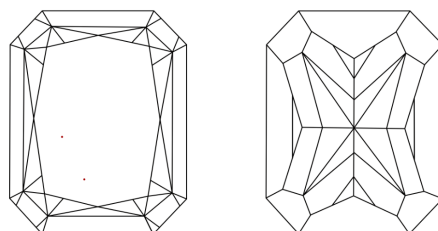
Inscription(s) LG636418790

Comments: This Laboratory Grown Diamond was created by Chemical Vapor Deposition (CVD) growth process.

PROPORTIONS

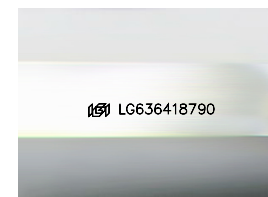


CLARITY CHARACTERISTICS



KEY TO SYMBOLS

Red symbols indicate internal characteristics.
Green symbols indicate external characteristics.



Sample Image Used

COLOR

D E F G H I J Faint Very Light Light

CLARITY

IF VVS 1-2 VS 1-2 SI 1-2 I 1-3
Internally Flawless Very Very Slightly Included Very Slightly Included Slightly Included Included

