



ELECTRONIC COPY

LG636418789 Report verification at igi.org

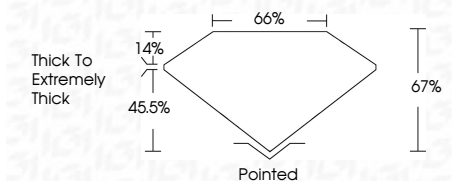


June 7, 2024 IGI Report Number LG636418789 Description LABORATORY GROWN DIAMOND Shape and Cutting Style CUT CORNERED RECTANGULAR MODIFIED BRILLIANT

Measurements 7.73 X 5.21 X 3.49 MM

GRADING RESULTS

Carat Weight 1.41 CARAT Color Grade FANCY INTENSE YELLOW Clarity Grade VVS 2



ADDITIONAL GRADING INFORMATION

Polish EXCELLENT Symmetry EXCELLENT Fluorescence NONE Inscription(s) IGI LG636418789

Comments: This Laboratory Grown Diamond was created by Chemical Vapor Deposition (CVD) growth process.



IGI

June 7, 2024 IGI Report No LG636418789 CUT CORNERED RECT. MODIFIED BRILLIANT 7.73 X 5.21 X 3.49 MM 1.41 CARAT FANCY INTENSE YELLOW VVS 2 67% 65% Thick To Extremely Thick Pointed EXCELLENT EXCELLENT NONE NONE IGI LG636418789 Comments: This Laboratory Grown Diamond was created by Chemical Vapor Deposition (CVD) growth process.

LABORATORY GROWN DIAMOND REPORT

June 7, 2024 IGI Report Number LG636418789 Description LABORATORY GROWN DIAMOND Shape and Cutting Style CUT CORNERED RECTANGULAR MODIFIED BRILLIANT Measurements 7.73 X 5.21 X 3.49 MM

GRADING RESULTS

Carat Weight 1.41 CARAT Color Grade FANCY INTENSE YELLOW Clarity Grade VVS 2

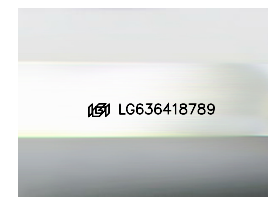
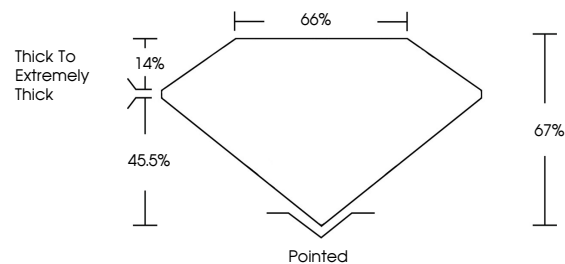
ADDITIONAL GRADING INFORMATION

Polish EXCELLENT Symmetry EXCELLENT Fluorescence NONE

Inscription(s) IGI LG636418789

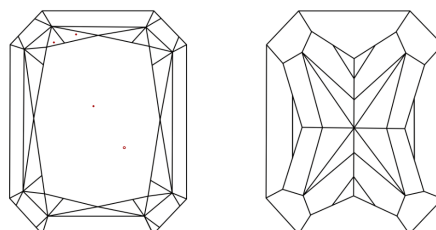
Comments: This Laboratory Grown Diamond was created by Chemical Vapor Deposition (CVD) growth process.

PROPORTIONS



Sample Image Used

CLARITY CHARACTERISTICS



KEY TO SYMBOLS

Red symbols indicate internal characteristics. Green symbols indicate external characteristics.

COLOR

D E F G H I J Faint Very Light Light

CLARITY

IF VVS 1-2 VS 1-2 SI 1-2 I 1-3 Internally Flawless Very Very Slightly Included Very Slightly Included Slightly Included Included

