



ELECTRONIC COPY

LABORATORY GROWN DIAMOND REPORT

June 5, 2024	
IGI Report Number	LG636407367
Description	LABORATORY GROWN DIAMOND
Shape and Cutting Style	ROUND BRILLIANT
Measurements	8.42 - 8.48 X 5.14 MM

GRADING RESULTS

Carat Weight	2.26 CARATS
Color Grade	FANCY INTENSE PINK
Clarity Grade	VS 1
Cut Grade	IDEAL

ADDITIONAL GRADING INFORMATION

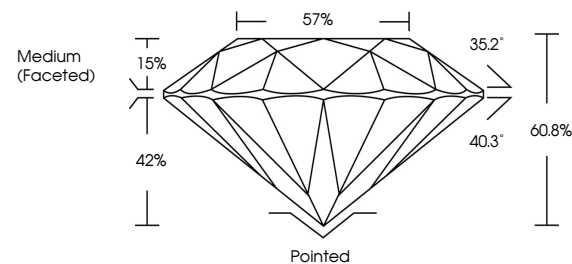
Polish	EXCELLENT
Symmetry	EXCELLENT
Fluorescence	SLIGHT
Inscription(s)	 LG636407367

Comments: This Laboratory Grown Diamond was created by Chemical Vapor Deposition (CVD) growth process.

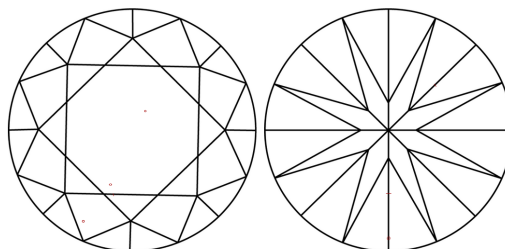
Indications of post-growth treatment.

LG636407367
Report verification at igi.org

PROPORTIONS

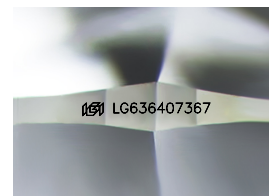


CLARITY CHARACTERISTICS



KEY TO SYMBOLS

Red symbols indicate internal characteristics.
Green symbols indicate external characteristics.



Sample Image Used

COLOR

D E F G H I J Faint Very Light Light

CLARITY

IF	VVS ¹⁻²	VS ¹⁻²	SI ¹⁻²	I ¹⁻³
Internally Flawless	Very Very Slightly Included	Very Slightly Included	Slightly Included	Included



© IGI 2020, International Gemological Institute

FD - 10 20

www.igi.org

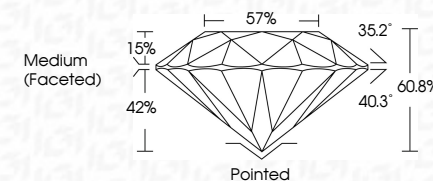
DIAMOND REPORT



June 5, 2024	
IGI Report Number	LG636407367
Description	LABORATORY GROWN DIAMOND
Shape and Cutting Style	ROUND BRILLIANT
Measurements	8.42 - 8.48 X 5.14 MM

GRADING RESULTS

Carat Weight	2.26 CARATS
Color Grade	FANCY INTENSE PINK
Clarity Grade	VS 1
Cut Grade	IDEAL



ADDITIONAL GRADING INFORMATION

Polish	EXCELLENT
Symmetry	EXCELLENT
Fluorescence	SLIGHT
Inscription(s)	15 LG-636407367

Comments: This Laboratory Grown Diamond was created by Chemical Vapor Deposition (CVD) growth process.
Indications of post-growth treatment.



June 5, 2024
GI Report No LG636407367
ROUND BRILLIANT

3.42 - 3.48 X 5.14 MM	
Carat Weight	2.26 CARATS
Color Grade	FANCY INTENSE PINK
Clarity Grade	VS 1
Cut Grade	IDEAL
Depth	60.8%
Table	57%
Grading	Mertl (m, Excellent)

Culet	Pointed
Polish	EXCELLENT
Symmetry	EXCELLENT
Fluorescence	SLIGHT

Comments:
This Laboratory Grown Diamond was created by Chemical Vapor Deposition (CVD) growth process.