

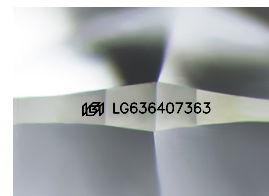
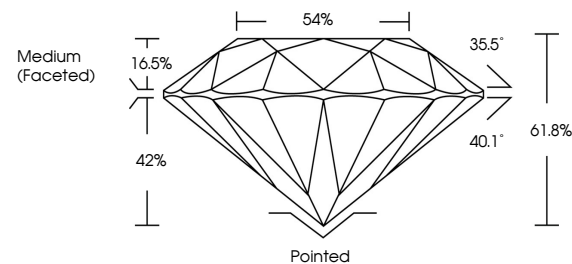


ELECTRONIC COPY

LABORATORY GROWN DIAMOND REPORT

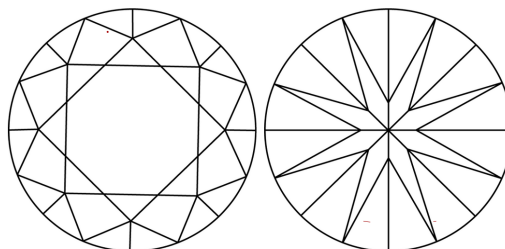
LG636407363
Report verification at igi.org

PROPORTIONS



Sample Image Used

CLARITY CHARACTERISTICS



KEY TO SYMBOLS

Red symbols indicate internal characteristics.
Green symbols indicate external characteristics.

COLOR

D E F G H I J Faint Very Light Light

CLARITY

IF	VVS ¹⁻²	VS ¹⁻²	SI ¹⁻²	I ¹⁻³
Internally Flawless	Very Very Slightly Included	Very Slightly Included	Slightly Included	Included



© IGI 2020, International Gemological Institute

FD - 10 20

www.igi.org

DIAMOND REPORT



June 5, 2024

IGI Report Number **LG636407363**

Description **LABORATORY GROWN DIAMOND**Shape and Cutting Style **ROUND BRILLIANT**

Measurements 9.05 - 9.07 X 5.60 MM

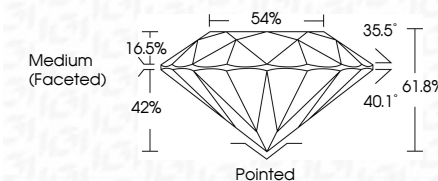
GRADING RESULTS

Carat Weight **2.83 CARATS**

Color Grade **FANCY INTENSE PINK**

Clarity Grade VS 1

Cut Grade **IDEAL**



ADDITIONAL GRADING INFORMATION

Polish **EXCELLENT**Symmetry **EXCELLENT**

Fluorescence SLIGHT

Inscription(s) LG636407363

Comments: This Laboratory Grown Diamond was created by Chemical Vapor Deposition (CVD) growth process.
Indications of post-growth treatment.



June 5, 2024
GI Report No LG636407363
ROUND BRILLIANT

2.05 - 9.07 X 5.60 MM		2.83 CARATS
Carat Weight		FANCY INTENSE PINK
Color Grade		
Clarity Grade		Vs 1
Cut Grade		IDEAL
Depth		61.8%
Table		54%
Girdle		Medium (Excellent)

Culet	Pointed
Polish	EXCELLENT
Symmetry	EXCELLENT
Fluorescence	SLIGHT

Comments:
This Laboratory Grown Diamond was created by Chemical Vapor Deposition (CVD) growth process.