

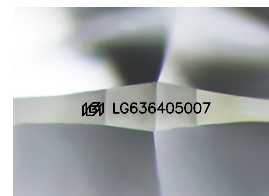
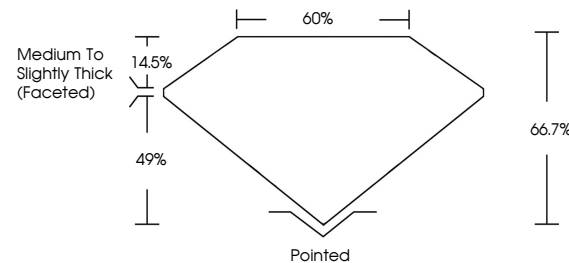


ELECTRONIC COPY

LABORATORY GROWN DIAMOND REPORT

LG636405007
Report verification at igi.org

PROPORTIONS



Sample Image Used

COLOR

D E F G H I J Faint Very Light Light

CLARITY

IF	VVS ¹⁻²	VS ¹⁻²	SI ¹⁻²	I ¹⁻³
Internally Flawless	Very Very Slightly Included	Very Slightly Included	Slightly Included	Included



© IGI 2020, International Gemological Institute

FD - 10 20

www.igi.org

DIAMOND REPORT



May 28, 2024

IGI Report Number **LG636405007**

Description	LABORATORY GROWN DIAMOND
-------------	--------------------------

Shape and Cutting Style **CUSHION MODIFIED
BRILLIANT**

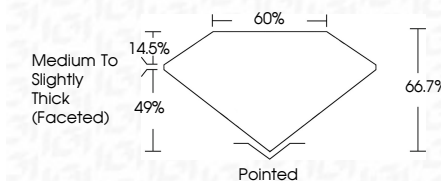
Measurements **8.24 X 6.54 X 4.36 MM**

GRADING RESULTS

Carat Weight 1.79 CARAT

Color Grade E

Clarity Grade VS 1



ADDITIONAL GRADING INFORMATION

Polish **EXCELLENT**Symmetry **VERY GOOD**Fluorescence **NONE**Inscription(s) LG636405007

Comments: This Laboratory Grown Diamond was created by Chemical Vapor Deposition (CVD) growth process.
Type IIa



May 26, 2024	GI Report No. LG4360507	1.79 CARAT	VS 1	Medium to Slightly Thick (faceted)	Polished	NONE	#6 LG4360507
GI Report No. LG4360507	Color Grade	64.7%	EXCELLENT		VERY GOOD		
1.79 CARAT	Clarity Grade	50%	VERY GOOD		NONE		
2.02 X 2.51 X 0.54 X 4.36 MM	Depth						
COUSIN MODIFIED BRILLIANT	Table						
	Color Grade						
	Clarity Grade						
	Table						
	Depth						
	Grain						
	Quet						
	Polish						
	Symmetry						
	Fluorescence						
	Inscription(s)						

Comments:

The Laboratory Grown Diamond was
 produced by the Chemical Vapor Deposition
 (CVD) growth process.

Type IIG