



**ELECTRONIC COPY**

LG636401531  
Report verification at [igi.org](http://igi.org)



June 5, 2024  
IGI Report Number **LG636401531**  
Description **LABORATORY GROWN DIAMOND**  
Shape and Cutting Style **ROUND BRILLIANT**  
Measurements **9.49 - 9.53 X 5.73 MM**  
**GRADING RESULTS**  
Carat Weight **3.18 CARATS**  
Color Grade **FANCY INTENSE BLUE**  
Clarity Grade **VS 1**  
Cut Grade **IDEAL**

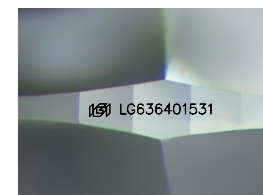
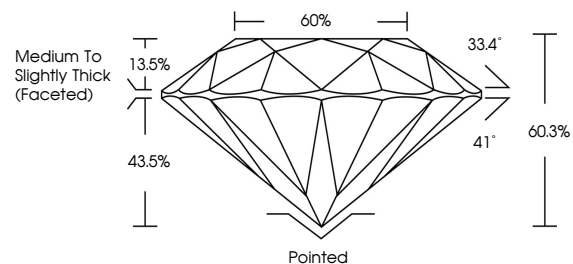
June 5, 2024  
IGI Report Number **LG636401531**  
Description **LABORATORY GROWN DIAMOND**  
Shape and Cutting Style **ROUND BRILLIANT**  
Measurements **9.49 - 9.53 X 5.73 MM**  
**GRADING RESULTS**  
Carat Weight **3.18 CARATS**  
Color Grade **FANCY INTENSE BLUE**  
Clarity Grade **VS 1**  
Cut Grade **IDEAL**

**ADDITIONAL GRADING INFORMATION**

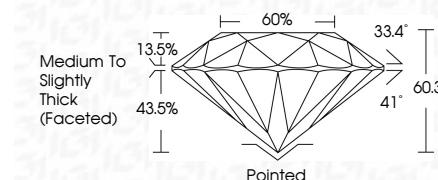
Polish **EXCELLENT**  
Symmetry **EXCELLENT**  
Fluorescence **NONE**  
Inscription(s) **LG636401531**

Comments: This Laboratory Grown Diamond was created by Chemical Vapor Deposition (CVD) growth process.  
Indications of post-growth treatment.

**PROPORTIONS**



Sample Image Used



**ADDITIONAL GRADING INFORMATION**

Polish **EXCELLENT**  
Symmetry **EXCELLENT**  
Fluorescence **NONE**  
Inscription(s) **LG636401531**  
Comments: This Laboratory Grown Diamond was created by Chemical Vapor Deposition (CVD) growth process.  
Indications of post-growth treatment.

**COLOR**

D E F G H I J Faint Very Light Light

**CLARITY**

IF	VS <sup>1-2</sup>	VS <sup>1-2</sup>	SI <sup>1-2</sup>	I <sup>1-3</sup>
Internally Flawless	Very Very Slightly Included	Very Slightly Included	Slightly Included	Included



**IGI**

June 5, 2024  
IGI Report No **LG636401531**  
**ROUND BRILLIANT**  
**9.49 - 9.53 X 5.73 MM**  
**3.18 CARATS**  
**FANCY INTENSE BLUE**  
**VS 1**  
**IDEAL**  
**60.3%**  
**60%**  
**Medium To Slightly Thick (Faceted)**  
**Pointed**  
**EXCELLENT**  
**EXCELLENT**  
**NONE**  
**IGI LG636401531**

Comments: This Laboratory Grown Diamond was created by Chemical Vapor Deposition (CVD) growth process.  
Indications of post-growth treatment.