

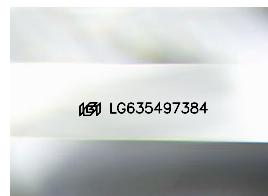
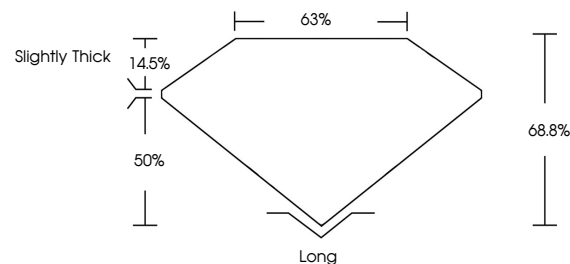


**ELECTRONIC COPY**

## LABORATORY GROWN DIAMOND REPORT

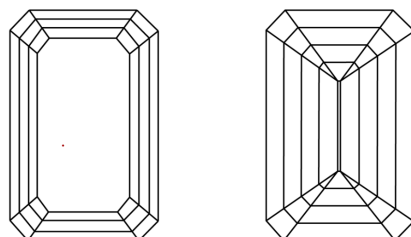
LG635497384  
Report verification at [lgi.org](https://lgi.org)

## PROPORTIONS



Sample Image Used

## CLARITY CHARACTERISTICS



### KEY TO SYMBOLS

Red symbols indicate internal characteristics.  
Green symbols indicate external characteristics.

## COLOR

D E F G H I J Faint Very Light Light

## CLARITY

IF	VVS <sup>1-2</sup>	VS <sup>1-2</sup>	SI <sup>1-2</sup>	I <sup>1-3</sup>
Internally Flawless	Very Very Slightly Included	Very Slightly Included	Slightly Included	Included



© IGI 2020, International Gemological Institute

FD - 10 20

**www.igi.org**

## DIAMOND REPORT



May 23, 2024

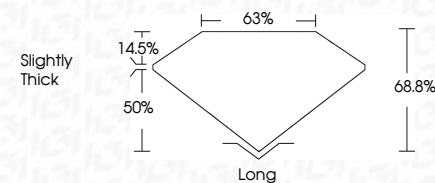
IGI Report Number **LG635497384**Description **LABORATORY GROWN DIAMOND**Shape and Cutting Style **EMERALD CUT**

Measurements 8.10 X 5.32 X 3.66 MM

## GRADING RESULTS

Carat Weight 1.57 CARAT

Color Grade D

Clarity Grade **VS 2**

### ADDITIONAL GRADING INFORMATION

Polish **EXCELLENT**Symmetry **EXCELLENT**Fluorescence **NONE**Inscription(s)  LG635497384

Comments: This Laboratory Grown Diamond was created by Chemical Vapor Deposition (CVD) growth process and may include post-growth treatment.  
Type IIa



IG

May 23, 2024  
GI Report No LG635497384

1.57 CARAT	1.57 CARAT
D	D
VVS 2	VVS 2
68.6%	68.6%
63%	63%
Slightly Thick	Slightly Thick
Long	Long
EXCELLENT	EXCELLENT
EXCELLENT	EXCELLENT
NONE	NONE
4611 CA55-672844	4611 CA55-672844

**Comments:**  
This Laboratory Grown Diamond was created by Chemical Vapor Deposition (CVD) growth process and may include post-growth treatment.  
Type IIa