



**INTERNATIONAL
GEMOLOGICAL
INSTITUTE**

ELECTRONIC COPY

LG635497193



May 25, 2024

IGI Report Number LG635497193

**ROUND BRILLIANT
LABORATORY GROWN DIAMOND**

5.09 - 5.13 X 3.14 MM

Carat Weight 0.50 CARAT

Color Grade FANCY BROWNISH PINK

Clarity Grade VVS 2

Cut Grade IDEAL

Polish EXCELLENT

Symmetry EXCELLENT

Fluorescence SLIGHT

Inscription(s) IGI LG635497193

Comments: This Laboratory Grown Diamond was created by Chemical Vapor Deposition (CVD) growth process. Indications of post-growth treatment.

LABORATORY GROWN DIAMOND REPORT

May 25, 2024

IGI Report Number

LG635497193

Description

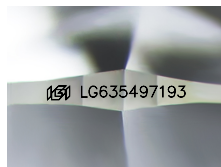
LABORATORY GROWN DIAMOND

Shape and Cutting Style

ROUND BRILLIANT

Measurements

5.09 - 5.13 X 3.14 MM



Sample Image Used

GRADING RESULTS

Carat Weight

0.50 CARAT

Color Grade

FANCY BROWNISH PINK

Clarity Grade

VVS 2

Cut Grade

IDEAL

ADDITIONAL GRADING INFORMATION

Polish

EXCELLENT

Symmetry

EXCELLENT

Fluorescence

SLIGHT

Inscription(s)

IGI LG635497193

Comments: This Laboratory Grown Diamond was created by Chemical Vapor Deposition (CVD) growth process. Indications of post-growth treatment.



May 25, 2024

IGI Report Number LG635497193

**ROUND BRILLIANT
LABORATORY GROWN DIAMOND**

5.09 - 5.13 X 3.14 MM

Carat Weight 0.50 CARAT

Color Grade FANCY BROWNISH PINK

Clarity Grade VVS 2

Cut Grade IDEAL

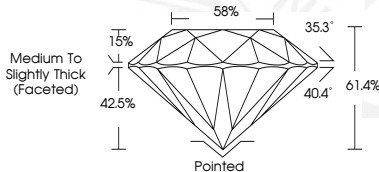
Polish EXCELLENT

Symmetry EXCELLENT

Fluorescence SLIGHT

Inscription(s) IGI LG635497193

Comments: This Laboratory Grown Diamond was created by Chemical Vapor Deposition (CVD) growth process. Indications of post-growth treatment.



THIS DOCUMENT WAS PRODUCED WITH THE FOLLOWING SECURITY MEASURES: SPECIAL DOCUMENT PAPER, INK SCREENS, WATERMARK, BACKGROUND DESIGN, HOLOGRAM AND OTHER SECURITY FEATURES NOT LISTED AND DO EXCEED DOCUMENT SECURITY INDUSTRY GUIDELINES.

For terms & conditions and to verify this report, please visit www.igi.org