

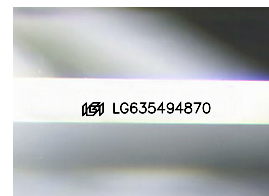
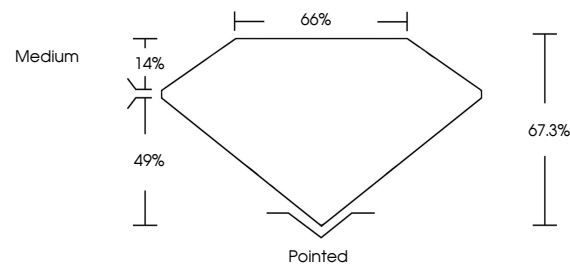


ELECTRONIC COPY

LABORATORY GROWN DIAMOND REPORT

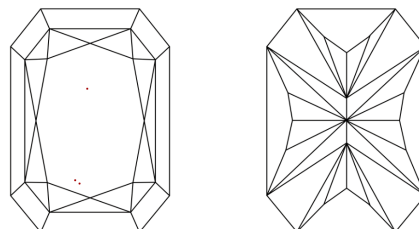
LG635494870
Report verification at igi.org

PROPORTIONS



Sample Image Used

CLARITY CHARACTERISTICS



KEY TO SYMBOLS

Red symbols indicate internal characteristics.
Green symbols indicate external characteristics.

COLOR

D E F G H I J Faint Very Light Light

CLARITY

IF	VVS ¹⁻²	VS ¹⁻²	SI ¹⁻²	I ¹⁻³
Internally Flawless	Very Very Slightly Included	Very Slightly Included	Slightly Included	Included



© IGI 2020, International Gemological Institute

FD - 10 20

www.igi.org

DIAMOND REPORT



May 29, 2024

IGI Report Number **LG635494870**Description **LABORATORY GROWN DIAMOND**

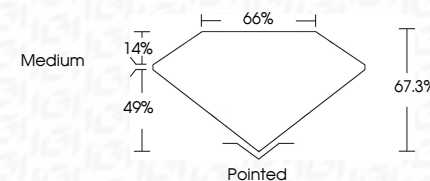
Shape and Cutting Style

Measurements **8.16 X 5.72 X 3.85 MM**

GRADING RESULTS

Carat Weight 1.57 CARAT

Color Grade D

Clarity Grade VVS 2

ADDITIONAL GRADING INFORMATION

Polish **EXCELLENT**Symmetry **EXCELLENT**Fluorescence **NONE**Inscription(s) LG635494870

Comments: This Laboratory Grown Diamond was created by Chemical Vapor Deposition (CVD) growth process and may include post-growth treatment.
Type IIa



May 29, 2024	GJ Report No. LG35494870		CUT CORNERED RECT MODIFIED BRILLIANT	
	1.61 X 8.72 X 3.85 MM	1.57 CARAT	D	
	Color Grade			
	Clarity Grade	VVS 2		
	Depth	67.3%		
	Table	66%		
	Grade	Medium		
	Quiet	Polished		
	Polish	EXCELLENT		
	Symmetry	EXCELLENT		
	Fluorescence	NONE		
	Inscriptions(s)	g/g LG35494870		

Comments:

The Laboratory Grown Diamond was
 a CVD growth process and may include
 post-growth treatment.
 type IIG