

LABORATORY GROWN DIAMOND REPORT

May 21, 2024	
IGI Report Number	LG635491121
Description	LABORATORY GROWN DIAMOND
Shape and Cutting Style	ROUND BRILLIANT
Measurements	9.59 - 9.63 X 5.93 MM

GRADING RESULTS

Carat Weight	3.40 CARATS
Color Grade	E
Clarity Grade	VVS 1
Cut Grade	IDEAL

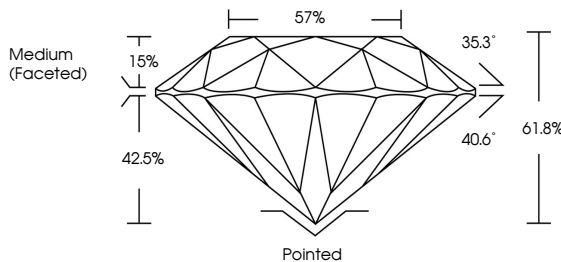
ADDITIONAL GRADING INFORMATION

Polish	EXCELLENT
Symmetry	EXCELLENT
Fluorescence	NONE
Inscription(s)	 LG635491121

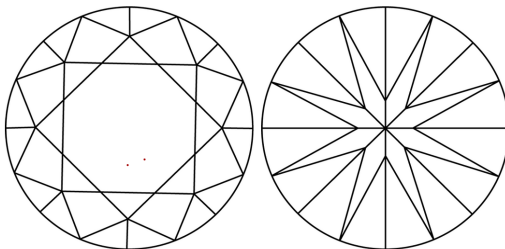
Comments: HEARTS & ARROWS
As Grown - No indication of post-growth treatment.
This Laboratory Grown Diamond was created by High
Pressure High Temperature (HPHT) growth process.
Type II

LG635491121
Report verification at igi.org

PROPORTIONS

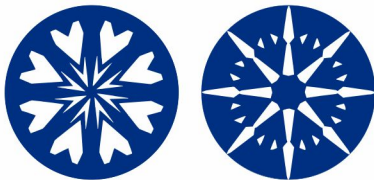


CLARITY CHARACTERISTICS

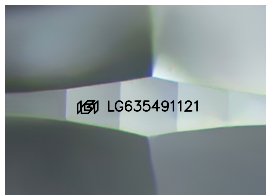


KEY TO SYMBOLS

Red symbols indicate internal characteristics.
Green symbols indicate external characteristics.



www.igi.org



Sample Image Used

COLOR

D E F G H I J Faint Very Light Light

CLARITY

IF	VVS ¹⁻²	VS ¹⁻²	SI ¹⁻²	I ¹⁻³
Internally Flawless	Very Very Slightly Included	Very Slightly Included	Slightly Included	Included



© IGI 2020, International Gemological Institute

FD - 10 20

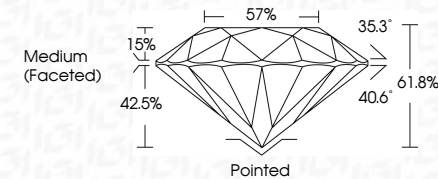
THIS DOCUMENT WAS PRODUCED WITH THE FOLLOWING SECURITY MEASURES: SPECIAL DOCUMENT PAPER, INK SCREENS, WATERMARK, BACKGROUND DESIGNS, HOLOGRAM AND OTHER SECURITY FEATURES NOT LISTED AND DO EXCEED DOCUMENT SECURITY INDUSTRY GUIDELINES



May 21, 2024	
IGI Report Number	LG635491121
Description	LABORATORY GROWN DIAMOND
Shape and Cutting Style	ROUND BRILLIANT
Measurements	9.59 - 9.63 X 5.93 MM

GRADING RESULTS

Carat Weight	3.40 CARATS
Color Grade	E
Clarity Grade	VVS 1
Cut Grade	IDEAL



ADDITIONAL GRADING INFORMATION

Polish	EXCELLENT
Symmetry	EXCELLENT
Fluorescence	NONE
Inscription(s)	16 LG635491121

Comments: HEARTS & ARROWS
As Grown - No indication of post-growth treatment.
This Laboratory Grown Diamond was created by High
Pressure High Temperature (HPHT) growth process.
Type II



IGI

May 21, 2024
IGI Report No LG635491121
ROUND BRILLIANT

9.99 - 9.63 X 5.93 MM	3.40 CARATS	
Carat Weight		
Color Grade		
Clarity Grade	VVS 1	Pointed
Cut Grade	IDEAL	EXCELLENT
Depth	61.8%	EXCELLENT
Table	57%	NONE
Girdle	Medium (Faceted)	4681 (GIA55040121)
Culet		
Polish		
Symmetry		
Fluorescence		
Measurements(s)		

Comments:
HEARTS & ARROWS
As Grown - No indication of post-growth treatment.