



ELECTRONIC COPY

LABORATORY GROWN DIAMOND REPORT

LG635491013
Report verification at igi.org

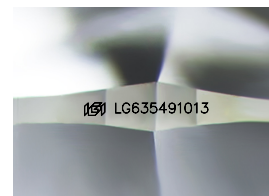
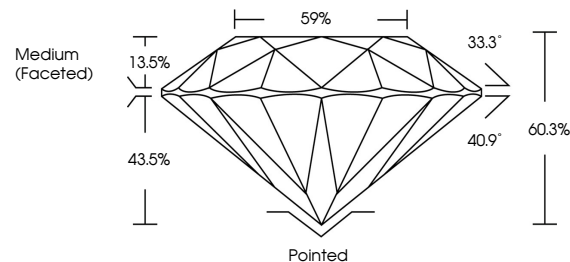
May 20, 2024	
IGI Report Number	LG635491013
Description	LABORATORY GROWN DIAMOND
Shape and Cutting Style	ROUND BRILLIANT
Measurements	7.85 - 7.88 X 4.74 MM
GRADING RESULTS	
Carat Weight	1.80 CARAT
Color Grade	G
Clarity Grade	VVS 2
Cut Grade	IDEAL

ADDITIONAL GRADING INFORMATION

Polish	VERY GOOD
Symmetry	EXCELLENT
Fluorescence	NONE
Inscription(s)	15 LG635491013

Comments: This Laboratory Grown Diamond was created by Chemical Vapor Deposition (CVD) growth process and may include post-growth treatment.
Type IIa

PROPORTIONS



Sample Image Used

COLOR

D E F G H I J Faint Very Light Light

CLARITY

IF	VVS ¹⁻²	VS ¹⁻²	SI ¹⁻²	I ¹⁻³
Internally Flawless	Very Very Slightly Included	Very Slightly Included	Slightly Included	Included



© IGI 2020, International Gemological Institute

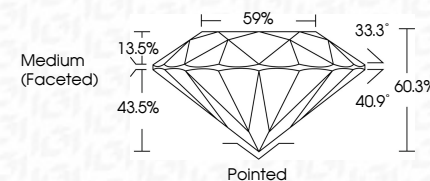
FD - 10 20

www.igi.org

DIAMOND REPORT



May 20, 2024	
IGI Report Number	LG635491013
Description	LABORATORY GROWN DIAMOND
Shape and Cutting Style	ROUND BRILLIANT
Measurements	7.85 - 7.88 X 4.74 MM
GRADING RESULTS	
Carat Weight	1.80 CARAT
Color Grade	G
Clarity Grade	VVS 2
Cut Grade	IDEAL



ADDITIONAL GRADING INFORMATION

Polish	VERY GOOD
Symmetry	EXCELLENT
Fluorescence	NONE
Inscription(s)	(15) LG635491013

Comments: This Laboratory Grown Diamond was created by Chemical Vapor Deposition (CVD) growth process and may include post-growth treatment.
Type IIa



May 20, 2024
GI Report No LG635491013
ROUND BRILLIANT

	7.85 - 7.88 X 4.74 MM	1.80 CARAT
	Carat Weight	G
	Color Grade	VVS 2
	Clarity Grade	IDEAL
	Cut Grade	60.3%
	Depth	59%
	Table	
	Grade	Metric mm (Equivalent)

	Pointed	VERY GOOD	EXCELLENT	NONE
Culet				
Polish				
Symmetry				
Fluorescence				

Comments:
This Laboratory Grown Diamond was created by Chemical Vapor Deposition (CVD) growth process and may include post-growth treatment.