

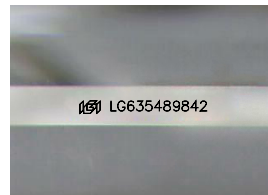
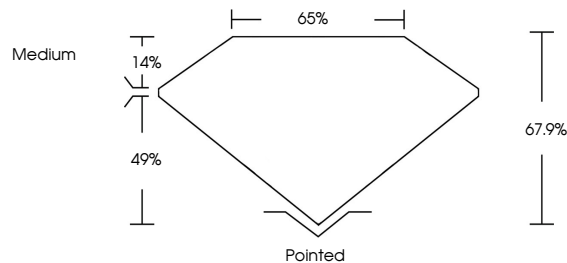


ELECTRONIC COPY

LABORATORY GROWN DIAMOND REPORT

LG635489842
Report verification at igi.org

PROPORTIONS



Sample Image Used

COLOR

D E F G H I J Faint Very Light Light

CLARITY

IF	VVS ¹⁻²	VS ¹⁻²	SI ¹⁻²	I ¹⁻³
Internally Flawless	Very Very Slightly Included	Very Slightly Included	Slightly Included	Included



© IGI 2020, International Gemological Institute

FD - 10 20

www.igi.org

DIAMOND REPORT



May 18, 2024

IGI Report Number **LG635489842**

Description	LABORATORY GROWN DIAMOND
-------------	--------------------------

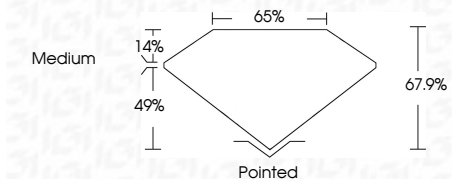
Shape and Cutting Style

Measurements **7.87 X 5.48 X 3.72 MM**

GRADING RESULTS

Carat Weight **1.38 CARAT**

Color Grade	D
-------------	---

Clarity Grade VVS 2

ADDITIONAL GRADING INFORMATION

Polish **EXCELLENT**Symmetry **EXCELLENT**Fluorescence **NONE**Inscription(s) LG635489842

Comments: This Laboratory Grown Diamond was created by Chemical Vapor Deposition (CVD) growth process and may include post-growth treatment.
Type IIa



May 18, 2024	Report No. GSAS569542	1.38 CARAT
CU CORNERED RECT. MODIFIED BRILLIANT		
7.87 X 5.46 X 3.72 MM		
Carat Weight		
Color Grade		
Clarity Grade	VVS 2	
Depth	67.9%	
Table	65%	
Grade	Medium	
Culet	Pointed	
Polish	EXCELLENT	
Symmetry	EXCELLENT	
Fluorescence	NONE	
Measurements (mm)	See GSAS569542	

Comments:
This Laboratory Grown Diamond was created by Chemical Vapor Deposition (CVD) growth process and may include post-growth treatment.