

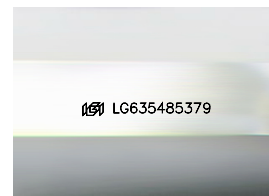
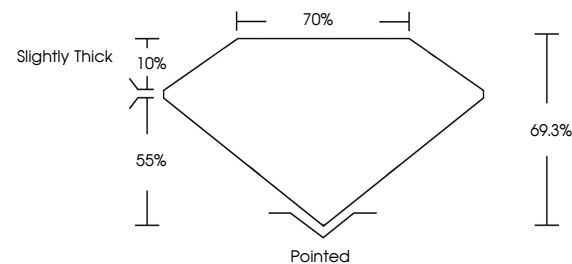


ELECTRONIC COPY

LABORATORY GROWN DIAMOND REPORT

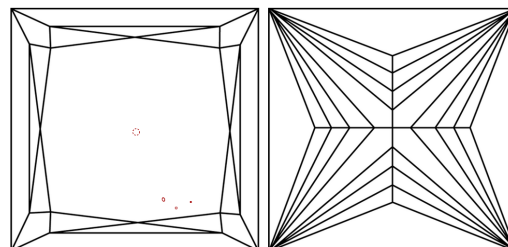
LG635485379
Report verification at igi.org

PROPORTIONS



Sample Image Used

CLARITY CHARACTERISTICS



KEY TO SYMBOLS

Red symbols indicate internal characteristics.
Green symbols indicate external characteristics.

COLOR

D E F G H I J Faint Very Light Light

CLARITY

IF	VVS ¹⁻²	VS ¹⁻²	SI ¹⁻²	I ¹⁻³
Internally Flawless	Very Very Slightly Included	Very Slightly Included	Slightly Included	Included



© IGI 2020, International Gemological Institute

FD - 10 20

DIAMOND REPORT



May 20, 2024

IGI Report Number **LG635485379**

Description	LABORATORY GROWN DIAMOND
-------------	--------------------------

Shape and Cutting Style **PRINCESS CUT**

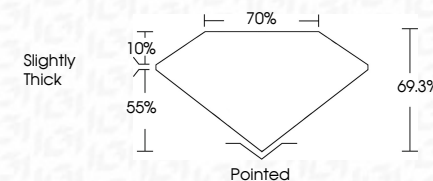
Measurements **7.36 X 7.17 X 4.97 MM**

GRADING RESULTS

Carat Weight **2.34 CARATS**

Color Grade **G**

Clarity Grade VS 1



ADDITIONAL GRADING INFORMATION

Polish **EXCELLENT**Symmetry **EXCELLENT**Fluorescence **NONE**Inscription(s) LG635485379

Comments: This Laboratory Grown Diamond was created by Chemical Vapor Deposition (CVD) growth process and may include post-growth treatment.
Type IIa



May 20, 2024
GI Report No LG635485379
PRINCESS CUT

3.36 X 1.17 X .497 MM	2.34 CARATS
Carat Weight	G
Color Grade	VS 1
Clarity Grade	66.3%
Depth	70%
Table	Slightly Thick
Girdle	Pointed
Fluorescence	EXCELLENT
Symmetry	EXCELLENT
Polish	NONE
Fluorescence	None
Symmetry	EXCELLENT
Polish	EXCELLENT
Fluorescence	EXCELLENT

Comments:
This Laboratory Grown Diamond was created by Chemical Vapor Deposition (CVD) growth process and may include post-growth treatment.