



ELECTRONIC COPY

LABORATORY GROWN DIAMOND REPORT

May 20, 2024	
IGI Report Number	LG635485150
Description	LABORATORY GROWN DIAMOND
Shape and Cutting Style	CUT CORNERED RECTANGULAR MODIFIED BRILLIANT
Measurements	8.26 X 5.73 X 3.68 MM

GRADING RESULTS

Carat Weight	1.57 CARAT
Color Grade	D
Clarity Grade	VVS 2
Cut Grade	EXCELLENT

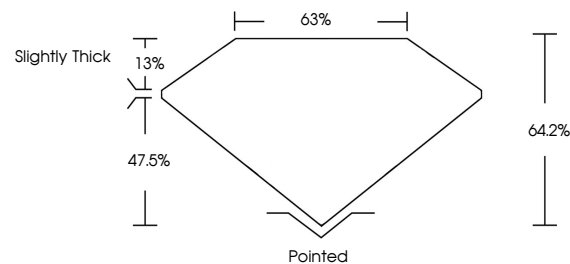
ADDITIONAL GRADING INFORMATION

Polish	EXCELLENT
Symmetry	EXCELLENT
Fluorescence	NONE
Inscription(s)	15 LG635485150

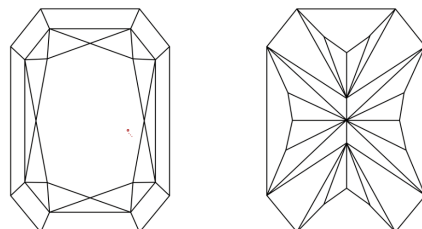
Comments: This Laboratory Grown Diamond was created by Chemical Vapor Deposition (CVD) growth process and may include post-growth treatment.
Type IIa

LG635485150
Report verification at lgi.org

PROPORTIONS

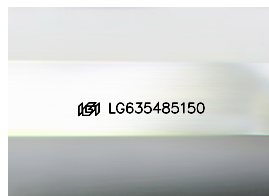


CLARITY CHARACTERISTICS



KEY TO SYMBOLS

Red symbols indicate internal characteristics.
Green symbols indicate external characteristics.



Sample Image Used

COLOR

D E F G H I J Faint Very Light Light

CLARITY

IF	WVS ¹⁻²	VS ¹⁻²	SI ¹⁻²	I ¹⁻³
Internally Flawless	Very Very Slightly Included	Very Slightly Included	Slightly Included	Included



© IGI 2020, International Gemological Institute

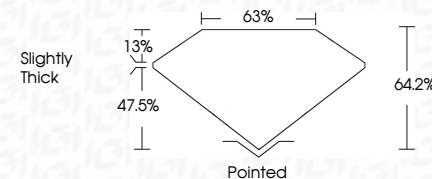
FD - 10 20

www.igi.org

DIAMOND REPORT



May 20, 2024	
IGI Report Number	LG635486150
Description	LABORATORY GROWN DIAMOND
Shape and Cutting Style	CUT CORNERED RECTANGULAR MODIFIED BRILLIANT
Measurements	8.26 X 5.73 X 3.68 MM
GRADING RESULTS	
Carat Weight	1.57 CARAT
Color Grade	D
Clarity Grade	VVS 2
Cut Grade	EXCELLENT



ADDITIONAL GRADING INFORMATION

Polish	EXCELLENT
Symmetry	EXCELLENT
Fluorescence	NONE
Inscription(s)	(16) LG635485150

Comments: This Laboratory Grown Diamond was created by Chemical Vapor Deposition (CVD) growth process and may include post-growth treatment.
Type IIa



IG

May 20, 2024	IGI Report No. IGL565465150
CUT CORNERED RECT. MODIFIED BRILLIANT	
10.25 X 5.73 X 3.48 MM	
Carat Weight	1.57 CARAT
Color Grade	D
Clarity Grade	VS 2
Cut Grade	EXCELLENT
Depth	64.2%
Table	63%
Graile	Slightly Thick
Culet	Pointed
Polish	EXCELLENT
Symmetry	EXCELLENT
Fluorescence	NONE
Inscription(s)	IGI IGL565465150
Comments:	
The Laboratory Grown Diamond was created by Chemical Vapor Deposition and may include post-growth treatment.	
Type Iia	