



ELECTRONIC COPY

LG635482356
Report verification at igi.org



May 18, 2024

IGI Report Number **LG635482356**

Description **LABORATORY GROWN DIAMOND**

Shape and Cutting Style **CUSHION BRILLIANT**

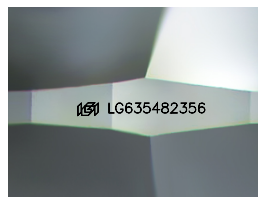
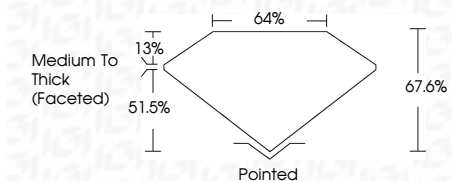
Measurements **7.75 X 6.48 X 4.38 MM**

GRADING RESULTS

Carat Weight **1.81 CARAT**

Color Grade **D**

Clarity Grade **VS 1**



Sample Image Used

ADDITIONAL GRADING INFORMATION

Polish **EXCELLENT**

Symmetry **EXCELLENT**

Fluorescence **NONE**

Inscription(s) **IGI LG635482356**

Comments: This Laboratory Grown Diamond was created by Chemical Vapor Deposition (CVD) growth process and may include post-growth treatment. Type IIa



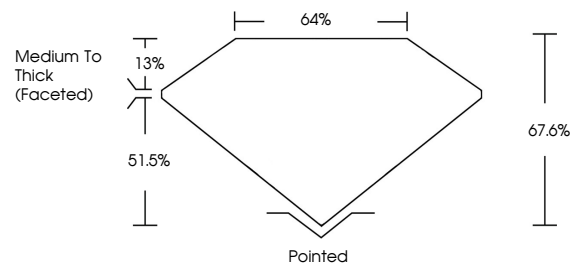
IGI

May 18, 2024
IGI Report No LG635482356
CUSHION BRILLIANT
7.75 X 6.48 X 4.38 MM
1.81 CARAT
D
VS 1
67.6%
64%
Medium To Thick (Faceted)
Pointed
EXCELLENT
EXCELLENT
NONE
IGI LG635482356

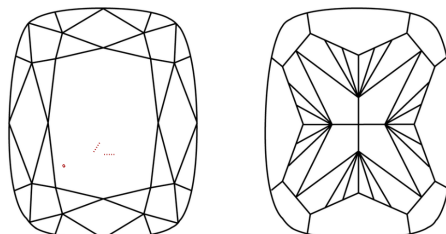
Comments: This Laboratory Grown Diamond was created by Chemical Vapor Deposition (CVD) growth process and may include post-growth treatment. Type IIa



PROPORTIONS



CLARITY CHARACTERISTICS



KEY TO SYMBOLS

Red symbols indicate internal characteristics.
Green symbols indicate external characteristics.

COLOR

D E F G H I J Faint Very Light Light

CLARITY

IF	VS ¹⁻²	VS ¹⁻²	SI ¹⁻²	I ¹⁻³
Internally Flawless	Very Very Slightly Included	Very Slightly Included	Slightly Included	Included