

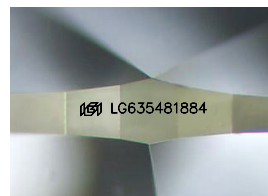
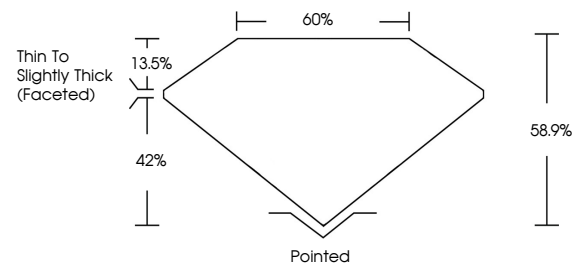


**ELECTRONIC COPY**

## LABORATORY GROWN DIAMOND REPORT

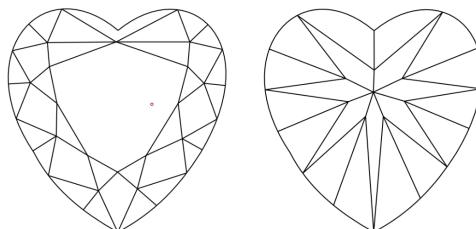
LG635481884  
Report verification at [lgi.org](https://lgi.org)

## PROPORTIONS



Sample Image Used

## CLARITY CHARACTERISTICS



### KEY TO SYMBOLS

Red symbols indicate internal characteristics.  
Green symbols indicate external characteristics.

## COLOR

D E F G H I J Faint Very Light Light

## CLARITY

IF	VVS <sup>1-2</sup>	VS <sup>1-2</sup>	SI <sup>1-2</sup>	I <sup>1-3</sup>
Internally Flawless	Very Very Slightly Included	Very Slightly Included	Slightly Included	Included



© IGI 2020, International Gemological Institute

FD - 10 20

**www.igi.org**

## DIAMOND REPORT



May 17, 2024

IGI Report Number **LG635481884**Description **LABORATORY GROWN DIAMOND**Shape and Cutting Style **HEART BRILLIANT**

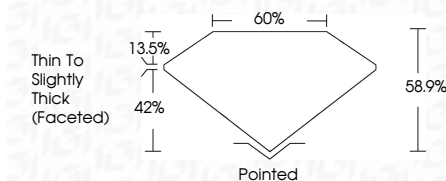
Measurements 8.86 X 10.11 X 5.95 MM

## GRADING RESULTS

Carat Weight 3.13 CARATS

Color Grade

Clarity Grade VS 1



### ADDITIONAL GRADING INFORMATION

Polish **EXCELLENT**Symmetry **EXCELLENT**Fluorescence **NONE**Inscription(s)  LG635481884

Comments: This Laboratory Grown Diamond was created by Chemical Vapor Deposition (CVD) growth process and may include post-growth treatment.  
Type IIa



May 17, 2024  
GI Report No LG635481884  
HEART BRILLIANT

3.86 X 10.11 X 5.95 MM	Carat Weight	3.13 CARATS
	Color Grade	F
	Clarity Grade	VS 1
	Depth	68.9%
	Table	60%
	Grade	Thin To Slightly Thick (graded)
	Culet	Pointed
	Polish	EXCELLENT
	Symmetry	EXCELLENT
	Fluorescence	NONE
	Report Number(s)	601112556181884

**Comments:**  
This Laboratory Grown Diamond was created by Chemical Vapor Deposition (CVD) growth process and may include post-growth treatment.