



**INTERNATIONAL
GEMOLOGICAL
INSTITUTE**

LABORATORY GROWN DIAMOND REPORT

June 18, 2024
 IGI Report Number **LG635478327**
 Description **LABORATORY GROWN DIAMOND**
 Shape and Cutting Style **CUT CORNERED RECTANGULAR MODIFIED
BRILLIANT**
 Measurements **8.97 X 6.35 X 4.40 MM**

GRADING RESULTS

Carat Weight **2.12 CARATS**
 Color Grade **K**
 Clarity Grade **VS 2**
 Cut Grade **VERY GOOD**

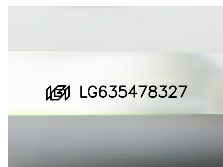
ADDITIONAL GRADING INFORMATION

Polish **EXCELLENT**
 Symmetry **EXCELLENT**
 Fluorescence **NONE**
 Inscription(s) **IGI LG635478327**

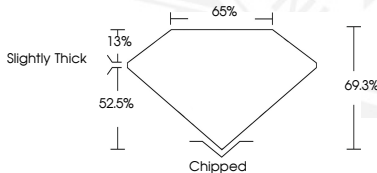
Comments: Pre-existing laser inscription on girdle.
 This Laboratory Grown Diamond was created by Chemical Vapor
 Deposition (CVD) growth process.
 Type IIa.Indications of post-growth treatment.

ELECTRONIC COPY

LG635478327



Sample Image Used



June 18, 2024
 IGI Report Number **LG635478327**
 CUT CORNERED RECTANGULAR
 MODIFIED BRILLIANT
 LABORATORY GROWN DIAMOND
8.97 X 6.35 X 4.40 MM
 Carat Weight **2.12 CARATS**
 Color Grade **K**
 Clarity Grade **VS 2**
 Cut Grade **VERY GOOD**
 Polish **EXCELLENT**
 Symmetry **EXCELLENT**
 Fluorescence **NONE**
 Inscription(s) **IGI LG635478327**

Comments: Pre-existing laser inscription on girdle. This Laboratory Grown Diamond was created by Chemical Vapor Deposition (CVD) growth process. Type IIa.Indications of post-growth treatment.



June 18, 2024
 IGI Report Number **LG635478327**
 CUT CORNERED RECTANGULAR
 MODIFIED BRILLIANT
 LABORATORY GROWN DIAMOND
8.97 X 6.35 X 4.40 MM
 Carat Weight **2.12 CARATS**
 Color Grade **K**
 Clarity Grade **VS 2**
 Cut Grade **VERY GOOD**
 Polish **EXCELLENT**
 Symmetry **EXCELLENT**
 Fluorescence **NONE**
 Inscription(s) **IGI LG635478327**

Comments: Pre-existing laser inscription on girdle. This Laboratory Grown Diamond was created by Chemical Vapor Deposition (CVD) growth process. Type IIa.Indications of post-growth treatment.

THIS DOCUMENT WAS PRODUCED WITH THE FOLLOWING SECURITY MEASURES: SPECIAL DOCUMENT PAPER, INK SCREENS, WATERMARK, BACKGROUND DESIGN, HOLOGRAM AND OTHER SECURITY FEATURES NOT LISTED AND DO EXCEED DOCUMENT SECURITY INDUSTRY GUIDELINES.

For terms & conditions and to verify this report, please visit www.igi.org