

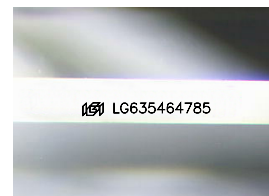
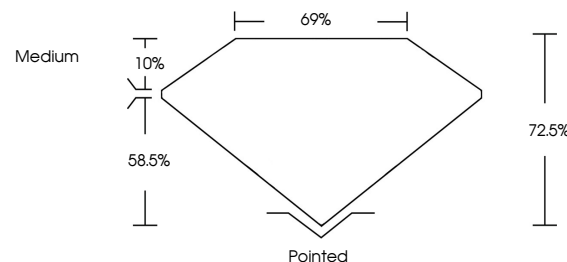


ELECTRONIC COPY

LABORATORY GROWN DIAMOND REPORT

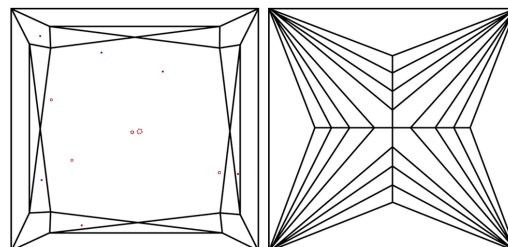
LG635464785
Report verification at lgi.org

PROPORTIONS



Sample Image Used

CLARITY CHARACTERISTICS



KEY TO SYMBOLS

Red symbols indicate internal characteristics.
Green symbols indicate external characteristics.

COLOR

D E F G H I J Faint Very Light Light

CLARITY

IF	VVS ^{1,2}	VS ^{1,2}	SI ^{1,2}	I ^{1,3}
Internally Flawless	Very Very Slightly Included	Very Slightly Included	Slightly Included	Included



© IGI 2020, International Gemological Institute

FD - 10 20

www.igi.org

DIAMOND REPORT



May 18, 2024

IGI Report Number **LG635464785**Description **LABORATORY GROWN DIAMOND**Shape and Cutting Style **PRINCESS CUT**

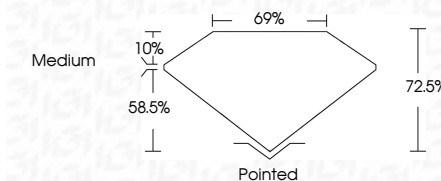
Measurements **7.83 X 7.57 X 5.49 MM**

GRADING RESULTS

Carat Weight **2.83 CARATS**

Color Grade	F
-------------	---

Clarity Grade VS 2



ADDITIONAL GRADING INFORMATION

Polish **EXCELLENCE**Symmetry **EXCELLEN**

Fluorescence NONI

Inscription(s) LG63546478

Comments: This Laboratory Grown Diamond was created by Chemical Vapor Deposition (CVD) growth process and may include post-growth treatment.
Type IIa



May 18, 2024
 IGI Report No LG635464785
 PRINCESS CLIT

Carat Weight	2.88 CARATS
Color Grade	F
Clarity Grade	VS 2
Depth	72.5%
Table	69%
Girdle	Medium
Culet	Pointed
Polish	EXCELLENT
Symmetry	EXCELLENT
Fluorescence	NONE

Comments:
This Laboratory Grown Diamond was created by Chemical Vapor Deposition (CVD) growth process and may include post-growth treatment.